

# IMPAC PYROMETER ACCESSORIES

MECHANICAL OPTIONS





# Enhance Your Impac Pyrometer



## Impac Pyrometer Mechanical Accessories

No other pyrometer series offers the flexibility and performance of Advanced Energy's Impac line. Our solutions meet your toughest design challenges and ensure high product quality and reproducibility in applications ranging from simple to complex. Get the most out of Impac pyrometers with mechanical accessories.

---

### Featured Accessories

- [Series 5 and 6](#)
- [Series 12](#)
- [Series 140](#)
- [Series 300 and 320](#)
- [Series 510, 520 and 600](#)
- [Temperature Switches](#)
- [Fiber Optic Pyrometers \(-LO\)](#)

## Series 5 and 6

### Impac Mechanical Accessory Options

Series 5 and 6	
Mounting Supports	
3 834 190	Mounting socket for Series 5 and 6
3 834 210	Adjustable mounting support (Series 5 and 6, cooling jackets series 300, 310, and 320)
3 846 670	Ball-flange with adapter 1 1/4"
3 834 410	Adjustable mounting support (3-hole) (for cooling jackets)
Tubes and Supports	
3 846 100	Mounting tube for Series 5 and 6
3 846 120	Flange tube for Series 5 and 6
3 846 240	Tube support with air purge nozzle
3 846 260	Instrument's support, for Series 5 and 6
3 846 290	Instrument's support, for Series 5 and 6, with fused silica window (for IS, IGA, IGA /23)
3 846 600	Instrument's support, for Series 5, with CaF <sub>2</sub> window (for IN /5)
3 846 610	Instrument's support, for Series 5, with ZnSe window (for IN)
3 846 280	Ceramic tube, closed, for tube support, D = 24 mm, L = 600 mm
3 846 960	Ceramic tube, open, for tube support D = 24 mm, L = 300 mm, Series 5, 6
3 846 590	Vacuum support, KF16, with quartz glass window, for Series 5 and 6 (IS, IGA, IGA /23)
3 846 620	Vacuum support, KF16, with CaF <sub>2</sub> window, for Series 5 (IN /5)
3 846 630	Vacuum support, KF16, with CaF <sub>2</sub> window, for Series 5 (IN)
Air Purges	
3 835 160	Air purge unit for Series 5, 6
3 835 440	Air purge unit for Series 5, 6, cooling jacket Series 140 (stainless steel)
3 835 290	Air purge unit for Scanner SCA 300, SCA 140, and SCA 5
Cooling Jackets	
3 837 230	Water cooling jacket (heavy duty) with integrated air purge, for Series 5 & 6 (not for IN 6/78)
3 837 280	Water cooling jacket (heavy duty) with fused silica window, for Series 5 & 6 (for IS, IGA, IGA /23)
3 837 340	Water cooling jacket (heavy duty) with CaF <sub>2</sub> window, for Series 5 (for IN /5)
3 837 350	Water cooling jacket (heavy duty) with ZnSe window, for Series 5 (for IN)
3 837 370	Water cooling jacket (light duty) with integrated air purge, for Series 5
3 837 380	Water cooling jacket (light duty) with fused silica window, for Series 5 (for IS, IGA)
3 837 390	Water cooling jacket (light duty) with CaF <sub>2</sub> window, for Series 5 (for IN /5)
3 837 400	Water cooling jacket (light duty) with ZnSe window, for Series 5 (for IN)
3 837 500	Water cooling jacket (light duty) with integrated air purge, for Series 6 (only for instruments with laser targeting. Not for IN 6/78)
3 837 510	Water cooling jacket (light duty) with fused silica window, for Series 6 (for IS, IGA, IGA /23 - only for instruments with laser targeting. Not for IN 6/78)
3 837 450	Water cooling jacket (light duty) with integrated air purge, for Series 5 with TV-outlet
3 837 530	Water cooling jacket (heavy duty) with integrated air purge, for Series 5 and 6 with TV-outlet
3 837 560	Water cooling jacket (light duty) with integrated air purge, for Series 6 with TV-outlet
3 837 540	Cooling plate with integrated air purge, for Series 5 and 6
Optical	
3 826 550	Tool for adjustment of optics (2 pieces), for IS 5, IGA 5, and ISQ 5
3 848 180	Exchange Optics N with distance of 90 to 250 mm, IS 5, IGA 5
3 848 190	Exchange Optics F with distance of 250 to infinity, IS 5, IGA 5



# Series 5 and 6

## Impac Mechancial Accessories

Series 5 and 6	
Optical (continued)	
3 846 640	Replacement window, quartz glass, D 25 x 3 mm, for Series 5 & 6
3 846 650	Replacement window, CaF <sub>2</sub> , D 25 x 3 mm, for Series 5
3 846 660	Replacement window, ZnSe, D 25 x 3 mm, for Series 5
3 846 790	Replacement window, sapphire, D 25 x 1.5 mm, with O-ring
3 846 750	Window slide without window, for Series 5 & 6 and cooling jackets Series 5, 6, 200, 140
3 838 530	Laser protection filter for IGA 6, IGA 6/23 and IGAR 6, 920 to 1100 nm, built into the instrument. Instrument calibrated with filter
Other Mechanical Accessories	
3 827 060	Laser targeting light, for IN 5, battery driven (not for sale in the US, FDA approval on request)
3 827 090	Twin laser targeting light, supply voltage 24 VDC a = 400 mm ±5%, for IN 5 (not for sale in the US, FDA approval on request)
3 835 590	90° mirror / adapter, for IS/IGA 5 and 6, ISR 6, and IS/IGA 12 with aperture less than 20 mm, with quartz window
3 835 610	90° mirror / adapter, for IN 5 and IN 5/5, with CaF <sub>2</sub> window
3 835 750	90° mirror / adapter, for IN 5 and IN 5/5, with ZnSe window
3 843 250	ROT 5, external scanning assembly with rotating mirror, for IS 5 and IGA 5, 24 VAC



Mounting Socket  
3 834 190



Adjustable Mounting Support  
3 834 210



Ball-Flange  
3 846 670



Mounting Tube  
3 846 100



Flange Tube  
3 846 120



Tube Support  
3 846 260, 3 846 290



Vacuum Flange Support  
3 846 590, 3846 620, 3 846 630



Air Purge Unit  
3 835 160



Air Purge Unit  
3 835 440



Water Cooling Jacket  
3 837 230



Water Cooling Jacket  
3 837 280, 3 837 340, 3 837 350



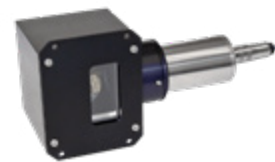
Water Cooling Jacket  
3 837 370, 3 837 380, 3 837 390,  
3 837 400



Cooling Plate  
3 837 540



90° Window/Adapter  
3 835 590, 3 835 610, 3 835 750



ROT 5  
3 843 250

# Series 12

## Impac Mechanical Accessory Options

Series 12	
Mounting Supports	
3 834 200	Ball and socket mounting
3 834 140	Ball and socket mounting (steel, 3-hole)
3 834 320	Mounting angle for Series 12
3 834 410	Adjustable mounting Support (3-hole)
3 826 630	Adjustable mounting base for series 12
Air Purges	
3 835 060	Air purge
Cooling Jackets	
3 837 330	Cooling jacket for Series 12, stainless steel
3 837 200	Cooling plate for Series 12
Optical	
3 848 610	Replacement optics 1 for IS 12/IGA 12, IS 12-AL (MB 10.5), a = 80 mm
3 848 620	Replacement optics 2 for IS 12/IGA 12, IS 12-AL (MB 10.5), a = 160 mm
3 848 630	Replacement optics 3 for IS 12/IGA 12, IS 12-AL (MB 10.5), a = 250 mm
3 848 640	Replacement optics 4 for IS 12/IGA 12, IS 12-AL (MB 10.5), a = 660 mm
3 848 650	Replacement optics 5 for IS 12/IGA 12, IS 12-AL (MB 10.5), a = 1300 mm
3 848 660	Replacement optics 6 for IS 12/IGA 12, IS 12-AL (MB 10.5), a = 5600 mm
3 848 670	Replacement focusable optics 1 for IS 12/IGA 12, a = 275 to 520 mm
3 848 680	Replacement focusable optics 2 for IS 12/IGA 12, a = 385 to 1125 mm
3 848 690	Replacement focusable optics 3 for IS 12/IGA 12, a = 540 to 9000 mm
3 848 720	Replacement optics 1-P for IS 12-Al, MB 9, a = 112 mm
3 848 730	Replacement optics 2-P for IS 12-Al, MB 9, a = 240 mm
3 848 740	Replacement optics 3-P for IS 12-Al, MB 9, a = 660 mm
3 848 750	Replacement optics 4-P for IS 12-Al, MB 9, a = 1300 mm
3 848 760	Replacement optics 5-P for IS 12-Al, MB 9, a = 5600 mm
Other	
3 835 590	90° mirror/adapter, for IS/IGA 5 and 6, ISR 6, and IS/IGA 12 with aperture less than 20 mm, with quartz window
3 843 260	ROT 10, external scanning assembly with rotating mirror, for Series 120 with fix focus optics, 24 VAC

## Series 12

### Impac Mechanical Accessories



Mounting Support  
3 834 140



Ball and Socket Mounting  
3 834 200



Mounting Angle  
3 834 320



Adjustable Mounting Support  
3 834 410



Air Purge Unit  
3 835 060



Cooling Jacket  
3 837 330



90° Mirror/Adapter  
3 835 590



ROT 10  
3 843 260

# Series 140

## Impac Mechanical Accessory Options

Series 140	
Mounting Supports	
3 834 270	Ball and socket mounting device for mounting rail
3 834 280	Adjustable mounting angle for mounting rail
3 834 410	Adjustable mounting support (3-hole)
3 835 490	Adapter for mounting rail to camera tripod and 3-hole
Tubes and Supports	
3 846 680	Tube support with air purge nozzle (without flange)
3 846 830	Sighting tube with air purge unit
Air Purges	
3 835 230	Air purge for Series 140 with focusable optics
3 835 290	Air purge unit for scanner SCA 300, SCA 140, and SCA 5
3 835 260	Air purge unit for cooling cap Series 140
Cooling Jackets	
3 837 290	Cooling jacket for Series 140, stainless steel
5 837 290	Cooling jacket for Series 140, stainless steel, unified thread
3 837 240	Cooling plate for Series 140
Optical	
3 848 220	Replacement optics 1 for IS/IGA 140, a = 130 to 200 mm
3 848 230	Replacement optics 2 for IS/IGA 140, a = 190 to 420 mm
3 848 240	Replacement optics 3 for IS/IGA 140, a = 340 to 4000 mm
3 848 210	Replacement optics 0-P for IP 140, a = 70 to 91 mm
3 848 250	Replacement optics 1-P for IP 140, a = 105 to 150 mm
3 848 260	Replacement optics 2-P for IP 140, a = 200 to 440 mm
3 848 270	Replacement optics 3-P for IP 140, a = 345 to 4300 mm
3 848 600	Replacement optics 0-PE for IPE 140, a = 70 to 90 mm
3 848 370	Replacement optics 1-PE for IPE 140, a = 105 to 150 mm
3 848 380	Replacement optics 2-PE for IPE 140, a = 200 to 440 mm
3 848 390	Replacement optics 3-PE for IPE 140, a = 345 to 4300 mm
3 907 060	Replacement optics 1-23 for IGA 140/23, a = 105 to 150 mm
3 907 070	Replacement optics 2-23 for IGA 140/23, a = 190 to 440 mm
3 907 080	Replacement optics 3-23 for IGA 140/23, a = 320 to 4300 mm
3 848 060	Replacement optics 1-N for IN 140/5, a = 100 to 128 mm
3 848 070	Replacement optics 2-N for IN 140/5, a = 187 to 322 mm
3 848 080	Replacement optics 3-N for IN 140/5, a = 362 to 2170 mm
Other	
3 846 580	Adapter Series 140 to Accessories Series 5, 48 mm
3 838 500	Laser protection filter for IGA 140 (built in) 920 to 1100 nm
3 835 450	90° mirror for IP 140, IS 140, IGA 140, IGA 140/23, quartz glass
3 835 460	90° mirror for IPE 140, CaF <sub>2</sub>



# Series 140

## Impac Mechancial Accessories



Ball and Socket Mounting  
3 834 270



Adjustable Mounting Angle  
3 834 280



Adjustable Mounting Support  
3 834 410



Mounting Rail Adapter  
3 835 490



Air Purge Unit for SCA  
3 835 290



Cooling Jacket  
3 837 290



Cooling Plate  
3 837 240



Adapter Series 5 Accessories  
3 846 580



90° Mirror/Adapter  
3 835 450

## Series 300 and 320

### Impac Mechanical Accessory Options

Series 300, 310, and 320	
Mounting Supports	
3 834 220	Adjustable mounting support I
3 834 230	Adjustable mounting support II
3 834 390	Ball and socket mounting
3 834 210	Adjustable mounting support (Series 5, 6, and cooling jacket series 300 and 320)
Tubes and Supports	
3 846 170	Mounting tube for Series 300 and 320
3 846 190	Flange tube for Series 300
3 846 250	Instrument's support for Series 300
3 846 570	Instrument's support with ZnSe window (for IN)
3 846 820	Instrument's support with CaF <sub>2</sub> window (for IN /5)
3 846 240	Tube support with air purge nozzle
3 846 280	Ceramic tube, closed, for tube support, D = 24 mm, L = 600 mm
3 846 960	Ceramic tube, open, for tube support, D = 24 mm, L = 300 mm
Air Purges	
3 835 180	Air purge unit for optical head II or Series 300, 320, or 218
3 835 240	Air purge unit with 90° mirror for optical head II or Series 300, 320, or 218
3 835 290	Air purge unit for Scanner SCA 300, SCA 140, and SCA 5
Cooling Jackets	
3 837 160	Cooling jacket, Series 300, with integrated air purge unit
3 837 170	Cooling jacket with integrated air purge and fused silica window (for IS/IGA 300)
3 837 270	Cooling jacket with integrated air purge and ZnSe window (for IN 300)
3 837 480	Cooling jacket with integrated air purge for Series 320 (not for IGA 320/23)
3 837 490	Cooling jacket with fused silica window for Series 320 (for IS and IGA, not for IGA 320/23)
3 837 570	Cooling jacket with integrated air purge for IGA 320/23
3 837 580	Cooling jacket with quartz window for IGA 320/23
Optical	
3 827 070	Laser targeting, battery driven (for IN 300)
3 848 770	Close-up lens for IGA 320/23, a = 50 mm (when mounted on optics, a = 250 mm)
3 848 780	Close-up lens for IGA 320/23, a = 120 mm (when mounted on optics, a = 250 mm)
Other	
3 835 760	Front protection window, quartz-glass (for IS 310, IGA 310, IS 320, IGA 320, and IGA 320/23)
3 846 790	Spare window sapphire (25 x 1.5) including Viton ring, threaded ring, and distance ring
3 846 950	Vacuum Flange, KF16, with support for Series 310 and 320, with quartz glass window (for IS, IGA, IGA /23)
3 846 730	Vacuum Flange, KF16, with support for Series 300, with CaF <sub>2</sub> window (for legacy product IN 300/5)
3 846 740	Vacuum Flange, KF16, with support for Series 300, with ZnSe window (for IN 300)

# Series 300 and 320

## Impac Mechancial Accessories



Adjustable Mounting Support  
3 834 210



Adjustable Mounting Support I  
3 834 220



Adjustable Mounting Support II  
3 834 230



Ball and Socket Mounting  
3 834 390



Mounting Tube  
3 846 170



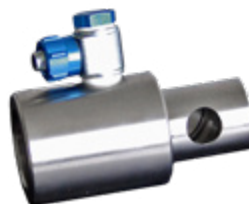
Flange Tube  
3 846 190



Flange System  
3 846 240 to 3 846 960



Air Purge Unit  
3 835 180



Air Purge Unit  
3 835 240



Air Purge Unit for SCA  
3 835 290



Cooling Jacket  
3 837 160



Cooling Jacket  
3 837 170, 3 837 270



Laser Targeting Light  
3 827 070



Close Up Lens  
3 848 770, 3 848 780

# Series 510, 520, and 600

## Impac Mechanical Accessory Options

Series 510 and 520	
Mounting Supports	
3 834 370	Mounting angle for sensor heads Series 500, 510, 520, 530, and 600
3 834 380	Adjustable mounting angle for sensor heads Series 500, 510, 520, 530, and 600
Air Purges	
3 835 330	Air purge unit for Series 500, 510, 520, and 530 (only sensor head 10:1)
3 835 340	Air purge unit with 90° mirror for Series 500, 510, 520, and 530 (only sensor head 10:1)
3 835 410	Air purge unit for Series 500, 510, 520, and 530 (only sensor head 2:1)
3 835 810	Air purge unit for Series 600 (only for Sensor heads 10:1 and 20:1)
3 835 820	Air purge unit for Series 600 (only for Sensor heads 2:1)
Other	
3 846 940	Vacuum Flange, KF16, with support for Series 500, with ZnSe window, for optics 10:1 only
3 848 790	Close up lens for IN 500 and IN 510, a = 17 mm, M = 2 mm (only sensor head 10:1)
3 874 830	Sensor head 2:1 for IN 510, sensor cable 3 m
3 874 840	Sensor head 2:1 for IN 510, sensor cable 15 m
3 874 860	Sensor head 10:1 for IN 510, sensor cable 3 m
3 874 870	Sensor head 10:1 for IN 510, sensor cable 15 m
3 874 780	Sensor head 2:1 for IN 520, sensor cable 3 m
3 874 790	Sensor head 2:1 for IN 520, sensor cable 15 m
3 874 880	Sensor head 10:1 for IN 520, sensor cable 3 m
3 874 890	Sensor head 10:1 for IN 520, sensor cable 15 m
3 835 830	90° mirror for Series 600 (only for Sensor heads 2:1)
3 835 800	DIN rail mount adapter for converter box Series 600



**Mounting Angle**  
3 834 370



**Adjustable Mounting Unit**  
3 834 380



**Air Purge**  
3 835 330



**Air Purge with Mirror**  
3 835 340



**Air Purge**  
3 835 410



**Tube Support**  
3 846 940



**Close Up Lens**  
3 848 790

# Temperature Switches

## Impact Mechanical Accessory Options

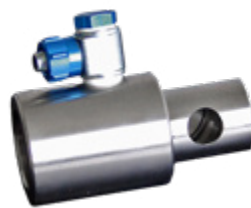
Temperature Switches (KTS 218 and KTG 218)	
Mounting Supports	
3 834 230	Adjustable mounting support II
Air Purges	
3 835 180	Air purge unit for optical head II or Series 300 or 218
3 835 240	Air purge unit with 90° mirror for optical head II or Series 300 or 218
Cooling Jackets	
3 837 440	Cooling jacket with air purge for temperature switches Series 300 or Series 218



Adjustable Mounting Support II  
3 834 230



Air Purge Unit  
3 835 180



Air Purge Unit  
3 835 240



Cooling Jacket  
3 837 440

## Fiber Optic Pyrometers (-LO, -LO/GL)

### Impac Mechanical Accessory Options Specific to Fiber Optic Pyrometers

Fiber Optic Pyrometers (-LO and -LO/GL)	
<b>Mounting Supports</b>	
3 834 220	Adjustable mounting support I, for optical head II
3 834 230	Adjustable mounting support II, for optical head II
3 834 390	Ball and socket mounting for fiber optical head I and II
<b>Tubes and Supports</b>	
3 836 840	Ceramic tube for IS 50-LO/GL, d = 35*27 mm, open, 600 mm
3 836 850	Ceramic tube for IS 50-LO/GL, d = 35*27 mm, closed, 600 mm
3 836 680	Ceramic tube d=17*12 mm, open, 300 mm
3 836 690	Ceramic tube d=17*12 mm, closed, 600 mm
3 836 800	Inconel tube IS 50, 140 mm
3 836 860	Inconel tube IS 50, 600 mm
3 836 900	Ceramic tube, d=35*27 mm, open, 300 mm
3 836 700	Ceramic tube, d=35*27 mm, open, 600 mm
3 836 710	Ceramic tube, d=35*27 mm, closed, 600 mm
3 836 750	Adapter for ceramic tube up to d = 35 x 27 mm
3 835 390	Mounting angle for IS 5/IS 50-LO/GL with closed ceramic tube, 600 mm
<b>Air Purges</b>	
3 835 170	Air purge unit, standard, stainless steel for optical head I
3 835 180	Air purge unit for optical head II or Series 300 or 218
3 835 240	Air purge unit with 90° mirror for optical head II or Series 300 or 218
3 835 400	Air purge and mounting angle for IS 5/IS 50-LO/GL
3 835 600	Air purge and mounting angle for IS 50-LO/GL with Inconel tube 300 mm (non-standard)
3 835 300	Air purge and mounting angle for IS 50-LO/GL with Inconel tube 140 mm
3 835 380	Air purge and mounting angle for IS 5/IS 50-LO/GL with Inconel tube 600 mm
3 835 310	Air purge and mounting angle for IS 5/IS 50-LO/GL with ceramic tube 300 mm
3 835 370	Air purge and mounting angle for IS 5/IS 50-LO/GL with ceramic tube 600 mm
3 835 990	Air purge for IS 50-LO/GL with Inconel tube 140 mm, 34 mm, no mounting angle
<b>Optical</b>	
3 873 320	Optics Head I, Series 5, 12, 50-LO plus, and 320 fiber optic pyrometers, for mono fiber a = 120 mm
3 873 340	Optics Head I, Series 5, 12, 50-LO plus, and 320 fiber optic pyrometers, for mono fiber a = 260 mm
3 873 350	Optics Head I, Series 5, 12, 50-LO plus, and 320 fiber optic pyrometers, for mono fiber a = 700 mm
3 873 420	Optics Head II, Fixed Adjusted, Series 5, 12, 50-LO plus, and 320 fiber optic pyrometers, for mono fiber, a = 87 mm
3 873 440	Optics Head II, Fixed Adjusted, Series 5, 12, 50-LO plus, and 320 fiber optic pyrometers, for mono fiber, a = 200 mm
3 873 460	Optics Head II, Fixed Adjusted, Series 5, 12, 50-LO plus, and 320 fiber optic pyrometers, for mono fiber, a = 600 mm
3 873 470	Optics Head II, Fixed Adjusted, Series 5, 12, 50-LO plus, and 320 fiber optic pyrometers, for mono fiber, a = 4500 mm
3 838 210	Optics Head II, Focusable, Series 5, 12, 50-LO plus, and 320 fiber optic pyrometers, a = 88 to 110 mm
3 838 220	Optics Head II, Focusable, Series 5, 12, 50-LO plus, and 320 fiber optic pyrometers, a = 95 to 129 mm
3 838 230	Optics Head II, Focusable, Series 5, 12, 50-LO plus, and 320 fiber optic pyrometers, a = 105 to 161 mm
3 838 240	Optics Head II, Focusable, Series 5, 12, 50-LO plus, and 320 fiber optic pyrometers, a = 200 to 346 mm
3 838 250	Optics Head II, Focusable, Series 5, 12, 50-LO plus, and 320 fiber optic pyrometers, a = 247 to 606 mm
3 838 260	Optics Head II, Focusable, Series 5, 12, 50-LO plus, and 320 fiber optic pyrometers, a = 340 to 4500 mm
3 873 480	Optical Head II, Line Shape Characteristics, Line length is 5% of distance (Series 5 and 12)



# Fiber Optic Pyrometers (-LO, -LO/GL)

## Impac Mechanical Accessory Options Specific to Fiber Optic Pyrometers

Fiber Optic Pyrometers (-LO and -LO/GL)							
Optical (Continued)							
3 873 490	Optical Head II, Line Shape Characteristics, Line length is 12% of distance (Series 5 and 12)						
3 836 790	Replacement optical head for IS 50-LO/GL						
3 827 320	Surplus for Sapphire protection window for optical head II						
Various	Replacement optical fiber, 0.2 mm (red), with DIN connector on instrument's side and SMA connector on optics side <sup>1</sup>						
	2.5 m: 3 838 048	5 m: 3 838 049	6 m: 3 838 051	7.5 m: 3 838 052	10 m: 3 838 053	11 m: 3 838 054	12.5 m: 3 838 055
	15 m: 3 838 056	16 m: 3 838 057	17.5 m: 3 838 061	20 m: 3 838 058	21 m: 3 838 059	25 m: 3 838 062	30 m: 3 838 063
	40 m: 3 838 065						
Various	Replacement optical fiber, 0.4 mm (blue), with DIN connector on instrument's side and SMA connector on optics side <sup>1</sup>						
	2.5 m: 3 838 071	5 m: 3 838 073	6 m: 3 838 074	7.5 m: 3 838 075	10 m: 3 838 076	11 m: 3 838 077	12.5 m: 3 838 078
	15 m: 3 838 079	16 m: 3 838 081	20 m: 3 838 082				
Various	Replacement optical fiber, 0.6 mm (green), with DIN connector on instrument's side and SMA connector on optics side (for legacy IP 140-LO) <sup>1</sup>						
	1 m: 3 838 025	2 m: 3 838 026	5 m: 3 838 027	8.5 m: 3 838 084			
Various	Replacement optical fiber, 0.2 mm (red), with SMA connector on both sides <sup>1</sup>						
	2.5 m: 3 836 117	5 m: 3 836 106	7.5 m: 3 836 119	10 m: 3 836 107	15 m: 3 836 108	20 m: 3 836 109	25 m: 3 836 128
	30 m: 3 836 111						
Various	Replacement optical fiber, 0.4 mm (blue), with SMA connector on both sides <sup>1</sup>						
	2.5 m: 3 836 151	5 m: 3 836 152	7.5 m: 3 836 153	10 m: 3 836 154	15 m: 3 836 155	30 m: 3 836 156	
Various	Replacement optical fiber for IS 50-LO/GL <sup>1</sup>						
	5 m: 3 836 160	10 m: 3 882 058	15 m: 3 832 059				
Vacuum Feedthrough							
3 838 680	Vacuum feedthrough with KF16 flange, for optical fiber 0.2 mm (red), DIN connectors						
3 838 690	Vacuum feedthrough with KF16 flange, for optical fiber 0.4 mm (blue), DIN connectors						
3 838 700	Vacuum feedthrough with KF16 flange, for optical fiber 0.6 mm (green), DIN connectors						
Various	Replacement optical fiber, 0.2 mm (red), with DIN-DIN for connection of instrument to vacuum feedthrough 3 838 680 <sup>1</sup>						
	0.5 m: 3 838 860	2.5 m: 3 838 930	5 m: 3 838 980	10 m: 3 838 990	20 m: 3 838 172		
Various	Replacement optical fiber, 0.4 mm (blue), with DIN-DIN for connection of instrument to vacuum feedthrough 3 838 690 <sup>1</sup>						
	0.5 m: 3 838 129	1 m: 3 838 128	1.5 m: 3 838 165	2 m: 3 838 164	2.5 m: 3 838 950		
Fiber Optic Pyrometers (-LO and -LO/GL)							
Vacuum Feedthrough (Continued)							
Various	Replacement optical fiber, 0.6 mm (green), with DIN-DIN for connection of instrument to vacuum feedthrough 3 838 700 <sup>1</sup>						
	0.5 m: 3 838 720	1.5 m: 3 838 900	2.5 m: 3 838 970	4 m: 3 838 850			
Various	Optical fiber 0.2 mm (red), PTFE sheathing, various lengths, for use in vacuum (between vacuum feedthrough and optical head)						
	0.5 m: 3 838 920	1 m: 3 838 127	1.5 m: 3 838 131	5 m: 3 838 132			
Various	Optical fiber 0.4 mm (blue), PTFE sheathing, various lengths, for use in vacuum (between vacuum feedthrough and optical head)						
	0.5 m: 3 838 940	1.5 m: 3 838 133					
Various	Optical fiber 0.6 mm (green), PTFE sheathing, various lengths, for use in vacuum (between vacuum feedthrough and optical head)						
	0.5 m: 3 838 710	1 m: 3 838 580	2.5 m: 3 838 960				

<sup>1</sup> Additional lengths available on request

## Fiber Optic Pyrometers (-LO, -LO/GL)

### Impac Mechanical Accessories

Continuous Casting Measurement System SG-LO			
3 836 980	Continuous casting measurement system SG-LO, with armored tube (5 m)		
Various	SG-LO system with extended optical fiber and corrugated hose, optical fiber 0.2 mm (red), DIN-SMA, for Series 12-LO		
	5 m armored tube, 6 m optical fiber: 3 835 520	10 m armored tube, 11 m optical fiber: 3 835 530	15 m armored tube, 16 m optical fiber: 3 835 540
Various	SG-LO system with extended optical fiber and corrugated hose, optical fiber 0.4 mm (blue), DIN-SMA, for Series 12-LO		
	5 m armored tube, 6 m optical fiber: 3 835 550	10 m armored tube, 11 m optical fiber: 3 835 560	15 m armored tube, 16 m optical fiber: 3 835 570
Various	SG-LO system with extended optical fiber and corrugated hose, optical fiber 0.2 mm (red), DIN-SMA, for Series 50-LO plus		
	5 m armored tube, 6 m optical fiber: 3 835 720	10 m armored tube, 11 m optical fiber: 3 835 730	15 m armored tube, 16 m optical fiber: 3 835 740
Various	SG-LO system with extended optical fiber and corrugated hose, optical fiber 0.2 mm (red), DIN-SMA, for ISQ 5-LO		
	5 m armored tube, 6 m optical fiber: 3 835 620	10 m armored tube, 11 m optical fiber: 3 835 630	15 m armored tube, 16 m optical fiber: 3 835 640
Various	SG-LO system with extended optical fiber and corrugated hose, optical fiber 0.4 mm (blue), DIN-SMA, for ISQ 5-LO		
	5 m armored tube, 6 m optical fiber: 3 835 650	10 m armored tube, 11 m optical fiber: 3 835 660	15 m armored tube, 16 m optical fiber: 3 835 670
3 846 770	5 m elongation for corrugated hose of the SG-LO system		
3 835 580	Replacement tube for SG-LO system, Inconel		
Other			
3 838 280	Laser notch filter, for focusable optical head II (built in), 920 to 1100 nm, for IGA 50-LO plus, IGAR 12-LO, (IP 140-LO (legacy))		
3 848 460	Strain relief for optical fiber ISR 12-LO / IGAR 12-LO		
3 848 470	Strain relief for optical fiber optics I		
3 848 480	Strain relief for optical fiber optics II		
3 848 860	Adapter f/f for connecting optical fibers DIN-DIN		

# Fiber Optic Pyrometers (-LO, -LO/GL)

## Impac Mechancial Accessories



Adjustable Mounting Support I  
3 834 220



Adjustable Mounting Support II  
3 834 230



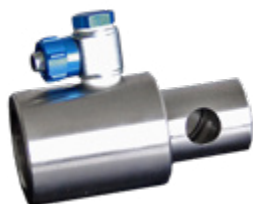
Ball and Socket Mounting  
3 834 390



Air Purge Unit  
3 835 170



Air Purge Unit  
3 835 180



Air Purge Unit  
3 835 240



Air Purge Unit  
3 835 310



Air Purge Unit  
3 835 370, 3 835 390



Air Purge Unit  
3 835 380



Optics Head I  
3 873 320, 3 873 340, 3 873 350



Optics Head II, Fixed Adjusted  
3 873 420 to 3 873 470



Optics Head II, Focusable  
3 838 210 to 3 838 260



Vacuum Feedthrough with K16  
3 838 680, 3 838 690, 3 838 700



SG Fitting for LO Instruments  
3 836 980



For international contact information,  
visit [advancedenergy.com](http://advancedenergy.com)

[sales.support@aei.com](mailto:sales.support@aei.com)  
+1 970 221 0108

## ABOUT ADVANCED ENERGY

Advanced Energy (AE) has devoted more than three decades to perfecting power for its global customers. AE designs and manufactures highly engineered, precision power conversion, measurement and control solutions for mission-critical applications and processes.

AE's power solutions enable customer innovation in complex semiconductor and industrial thin film plasma manufacturing processes, demanding high and low voltage applications, and temperature-critical thermal processes.

With deep applications know-how and responsive service and support across the globe, AE builds collaborative partnerships to meet rapid technological developments, propel growth for its customers and power the future of technology.

PRECISION | POWER | PERFORMANCE

---

©2019 Advanced Energy Industries, Inc. All rights reserved. Advanced Energy® and Impac® are trademarks of Advanced Energy Industries, Inc. Profibus® and Profinet® are trademarks of Profibus and Profinet International (PI). DeviceNet™ and EtherNet/IP® are trademarks of ODVA, Inc.