

ARTESYN LCM1500

1500 Watts Bulk Front End



Advanced Energy's Artesyn LCM1500 series provide for a very wide range of AC-DC embedded power requirement. Featuring high build quality with robust screw terminals, long life, and typical full-load efficiency of greater than 89 percent, these units are ideal for use in industrial and medical applications. They are backed by a comprehensive set of industrial and medical safety approvals and certificates. Variable-speed 'Smart Fans' draw on software controls developed by Advanced Energy to match fan speed to the unit's cooling requirement and load current. Slowing the fan not only saves power but also reduces wear, thus extending its life.

SPECIAL FEATURES

- 1500 W output power
- Low cost
- 2.5" x 5.2" x 10.0"
- 12 Watts per cubic inch
- Industrial/Medical safety
- -40°C to 70°C with derating
- Optional 5 VDC @ 2 A housekeeping
- High efficiency: 89% typical
- Variable speed "Smart Fans"
- DSP controlled
- Conformal coat option
- ± 10% adjustment range
- Margin programming
- OR-ing FET
- Semi F47 compliance at high line

COMPLIANCE

- EMI Class A
- EN61000 Immunity
- RoHS3

SAFETY

- UL/cUL Recognized ITE (UL/CSA62368-1)
- UL/cUL Recognized Medical (ANSI/AAMI ES60601-1)
- TUV-SuD ITE + Medical (EN62368-1 and EN60601-1)
- CE LVD (EN62368-1 + RoHS)
- BSMI
- CB Report
- CE and UKCA Mark
 - through Demko for IEC60950-1
 - through TUV-SuD for IEC60601-1

AT A GLANCE

Total Power

1500 W

of Outputs

Single

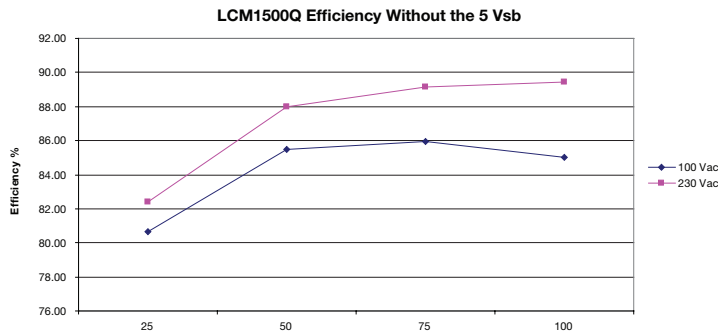
Outputs

12 to 48 VDC
Optional 5 VDC standby



ELECTRICAL SPECIFICATIONS

| Input | |
|-------------------|---|
| Input Range | 90 to 264 VAC (Operating) 115/230 VAC (Nominal) Terminal Block |
| Frequency | 47 to 440 Hz, Nominal 50/60 |
| Input Fusing | Internal 30 A fuses, both lines fused |
| Inrush Current | ≤ 25 A peak |
| Power Factor | 0.99 typical, meets EN61000-3-2 |
| Harmonics | Meets IEC 1000-3-2 requirements |
| Input Current | 18 A RMS max input current, at 100 VAC |
| Hold Up Time | 14 ms minimum for main O/P, at full rated load |
| Efficiency | > 89% typical at full load / 230 VAC nominal |
| Leakage Current | < 400 μA @ 240 VAC for UL test method |
| Isolation Voltage | PRI-Chassis 2087 VAC Basic PRI-SEC 4000 VAC Reinforced 2xMOPP SEC-Chassis 500 VDC |



ELECTRICAL SPECIFICATIONS

| Output | | |
|----------------------------------|---|---|
| Output Rating | See Ordering Information Table | |
| Factory Set Point | ± 0.5% | 230 VAC @ half load |
| Total Regulation | Main Output: ± 2.0% 5 Vsb: ± 5% | Combined line/load/temperature change, warm-up drift when measured at output terminal |
| Rated Load | 1500 W maximum | Derate linear to 50% from 50 °C to 70 °C |
| Minimum Load | Main Output @ 0A 5 Vsb @ 0A | No loss of regulation |
| Output Ripple | Main Output: 1% max p-p 5 Vsb: 50 mV max p-p | Measured with 0.1 µF Ceramic and 10 µF Tantalum Capacitor on any output, 20 MHz |
| Output Voltage Overshoot | | No overshoot/undershoot outside the regulation band during on or off cycle |
| Transient Response | Peak Deviation: ± 4% Setting time < 300 µS | 50% load step @ 1 A/µs Step load valid between 10% to 100% of output rating Recovery time to within 1% of set point at onset of transient |
| Max Units in Parallel | Up to 4 | |
| Remote Sense | | Compensation up to 500 mV |
| Short Circuit Protection (SCP) | Protected, no damage to occur | Bounce mode |
| Overcurrent Protection (OCP) | 105% to 125% 120% to 170% | Main output (Bounce mode) 5 Vsb output (Bounce mode) |
| Overvoltage Protection (OVP) | 125% to 145% 110% to 125% | Main output (Latch mode) 5 Vsb output (Latch mode) |
| Overtemperature Protection (OTP) | 55 to 65 °C ambient temperature | Shut down and auto-recover |

ENVIRONMENTAL SPECIFICATIONS

| | |
|-----------------------------|--|
| Operating Temperature range | -40 to +70 °C linear derating to 50% from 50°C to 70°C. For "L" version linear derating starts at 45°C |
| Storage Temperature | -40 to +85 °C |
| Humidity | 10% to 95% Non-operating. 20-90% operating. Conformal coat option available |
| Altitude | Operating - 16,404 feet (5000 m) Storage - 30,000 feet (9144 m) |
| Shock | MIL-STD-810F 516.5 Procedure I, VI Storage |
| Vibration | MIL-STD-810F 514.5 Cat. 4, 10 Storage |
| Fan Noise | < 45 dBA, 80% load at 30°C. For the "L" version, the noise is < 61dBA at 80% load at 25°C |

ORDERING INFORMATION TABLE 1

| Model Number | Output | Nominal Output Voltage Set Point | Set Point Tolerance | Adjustment Range | Current | | Output Ripple P/P (0-50 °C) | Max Continuous Power | Combined Line/ Load Regulation |
|--------------|--------|----------------------------------|---------------------|------------------|---------|-------|-----------------------------|----------------------|--------------------------------|
| | | | | | Min | Max | | | |
| LCM1500L | 12 V | 12 V | ±0.5% | 10.8 - 13.2 V | 0 A | 133 A | 120 mV | 1500 W | 2% |
| LCM1500N | 15 V | 15 V | ±0.5% | 13.5 - 16.5 V | 0 A | 100 A | 150 mV | 1500 W | 2% |
| LCM1500Q | 24 V | 24 V | ±0.5% | 21.6 - 26.4 V | 0 A | 67 A | 240 mV | 1500 W | 2% |
| LCM1500R | 28 V | 28 V | ±0.5% | 25.2 - 30.8 V | 0 A | 53 A | 280 mV | 1500 W | 2% |
| LCM1500U | 36 V | 36 V | ±0.5% | 32.4 - 39.6 V | 0 A | 43 A | 360 mV | 1500 W | 2% |
| LCM1500W | 48 V | 48 V | ±0.5% | 43.2 - 52.8 V | 0 A | 33 A | 480 mV | 1500 W | 2% |

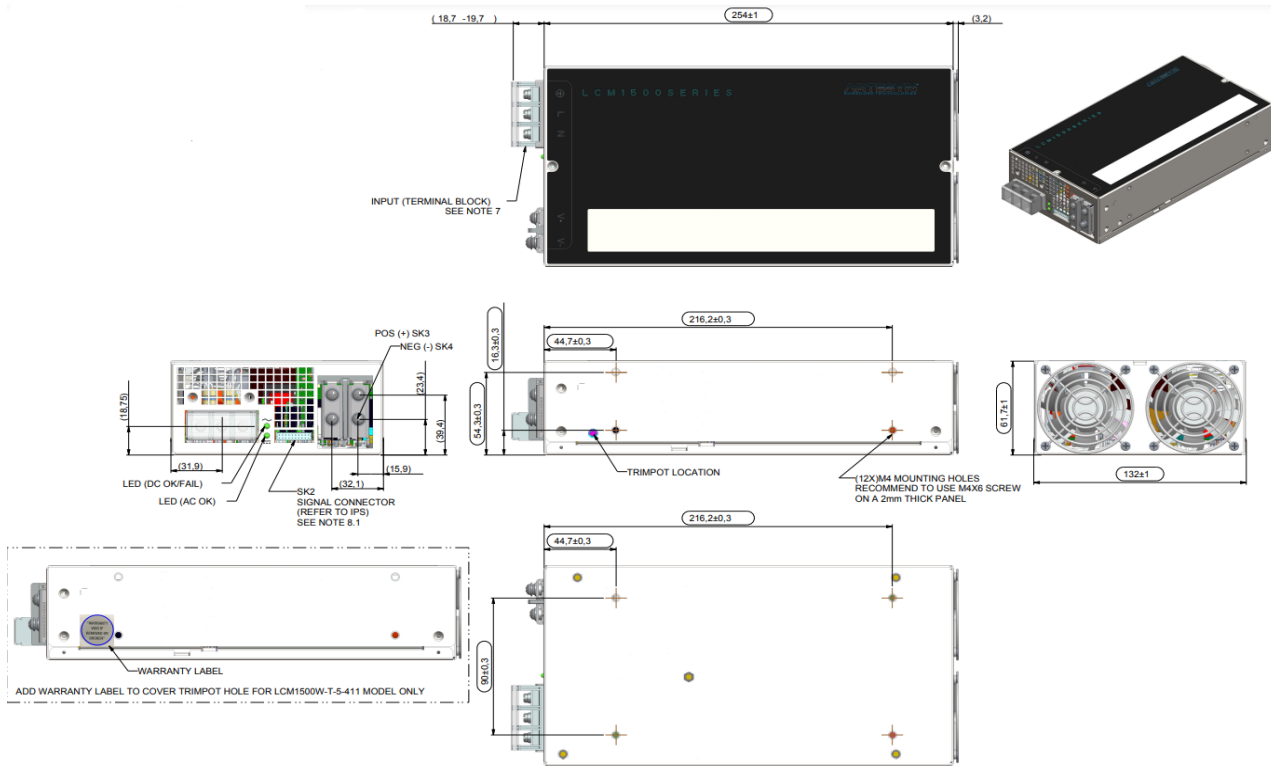
Note: LCM1500Q is 80 PLUS® certified

ORDERING INFORMATION TABLE 2

| LCMXXXXY | - | A | - | B | - | C | - | ### |
|-----------------------------------|----|--------------------|---|------------------|---|-----------------------|---|---|
| Case Size | | Input Termination | | Acoustic Noise | | Option Codes* | | Hardware Code |
| 1-Phase input where XXXX = | | | | | | | | |
| 1500 = 2.5" x 5.2" x 10.0", 1500W | | | | Blank = Standard | | Blank = No Options | | Factory Assigned for Modified Standards |
| | | T = Terminal Block | | | | 1 = Conformal Coat | | |
| Voltage Code Y = | | | | | | 2 = Reverse Air | | |
| Code | | | | | | 3 = Opt 1 + 2 | | |
| L | 12 | | | | | 4 = 5V Standby | | |
| N | 15 | | | | | 5 = Opt 1 + 4 | | |
| Q | 24 | | | | | 6 = Opt 2 + 4 | | |
| R | 28 | | | | | 7 = Opt 1 + 2 + 4 | | |
| U | 36 | | | | | 8 = Constant Current | | |
| W | 48 | | | | | 9 = Opt 1 + 8 | | |
| | | | | | | B = Opt 2 + 8 | | |
| | | | | | | C = Opt 1 + 2 + 8 | | |
| | | | | | | D = Opt 4 + 8 | | |
| | | | | | | E = Opt 1 + 4 + 8 | | |
| | | | | | | F = Opt 2 + 4 + 8 | | |
| | | | | | | G = Opt 1 + 2 + 4 + 8 | | |

*Note: Some option code combinations may not be configured yet and will require extra leadtime the first time they are requested.

MECHANICAL DRAWINGS (LCM1500Q-T, LCM1500R-T, LCM1500U-T and LCM1500W-T)

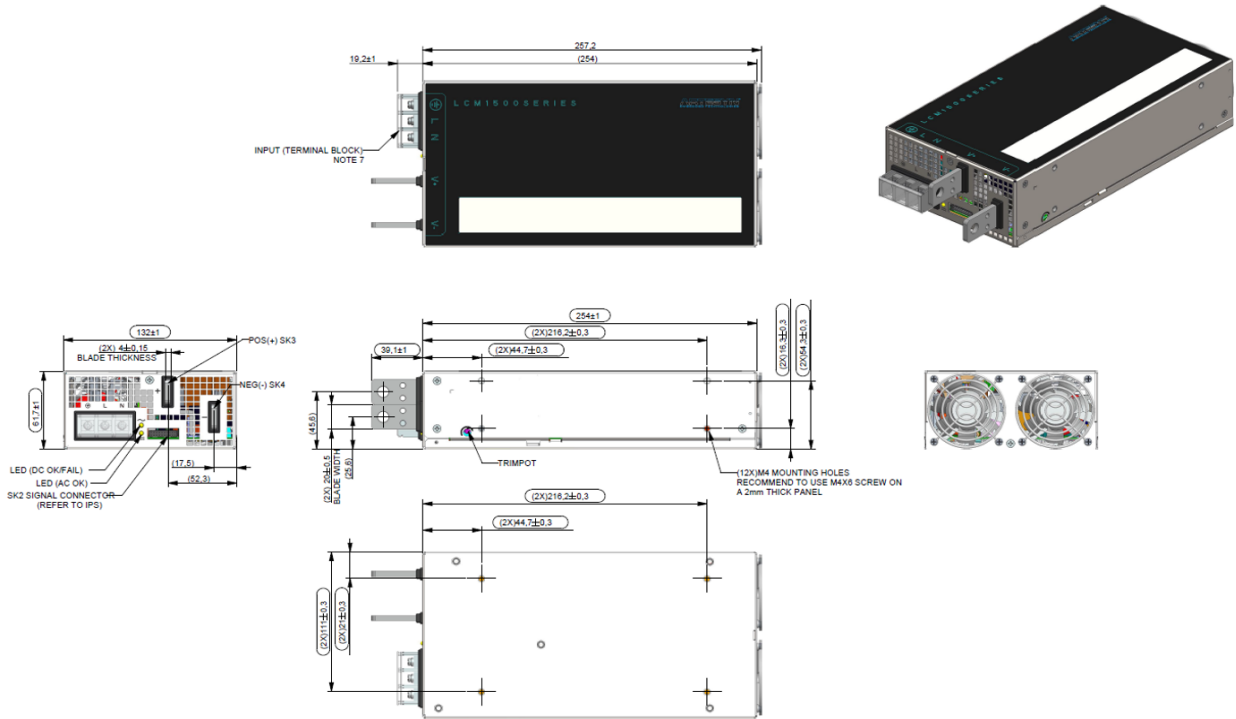


Notes:
 MOUNTING LOCATIONS SCREW
 PENETRATION DEPTH IS 4.6 mm MAX.
 RECOMMENDED SCREW TORQUE:
 M3.5 x 0.6P = 6 - 8kgf-cm
 M4.0 x 0.7P = 8 - 10kgf-cm



Bus bar adapter (option)
 P/N 500-006848-0000

MECHANICAL DRAWINGS (LCM1500L-T and LCM1500N-T)



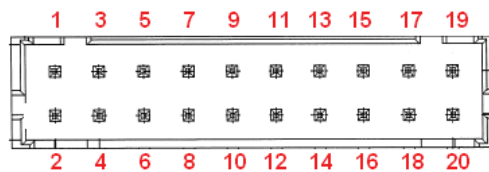
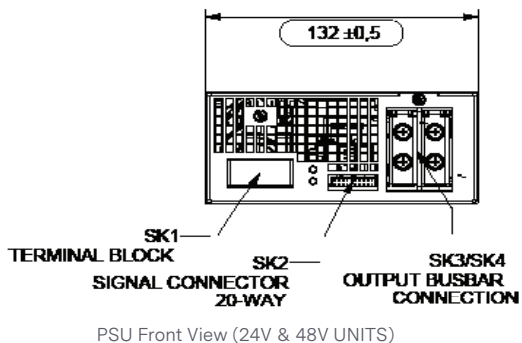
Notes:

1. Parts must be completely assembled.
2. Quality controlled dimensions. These dimensions to be included in the mechanical CPK of 1.33
3. Casing parts used must have matching color. In order to ensure color matching of parts, it is required that the raw material that will be processed by the fabricator will come from the same supplier and the sheetmetal fabricator for all matching parts must be the same. To avoid color variations on the same lot delivered, all parts with matching color requirement should be delivered as a set by the fabricator.
5. Sheared edges visible to the customer should have no rust formation. If rust formation is present then a concealing layer of silver ink or some other substitute should be applied on the rusted area.
6. Mounting locations screw penetration depth is 4.6mm max.
7. Recommended screw torque:
 - M3.5X0.6P = 6-8kgf-cm
 - M4.0X0.7P = 8-10kgf-cm
8. Input: terminal block type. M4 screw torque value of 16kgf-cm using wire gauge 18-10 (13mm centers)

PIN ASSIGNMENT

| SIGNALS | DESCRIPTION | PIN # |
|----------|---|----------------|
| +Vout | Power Rail | SK3 |
| GND | Power Ground | SK4 |
| SIGNALS | DESCRIPTION | SK2 PIN NUMBER |
| A2 | EEPROM Address | 1 |
| -VPROG | Return Connection of External Supply for Margin Programming | 2 |
| A1 | EEPROM Address | 3 |
| -Vsense | Remote Sense Return | 4 |
| ISHARE | Load Share Voltage | 5 |
| A0 | EEPROM Address | 6 |
| SDA1 | Serial Data Signal (I2C) | 7 |
| +VPROG | Positive Connection of External Supply for Margin Programming | 8 |
| SCL1 | Serial Clock Signal (I2C) | 9 |
| +Vsense | Remote Sense Positive | 10 |
| 5VSB | 5 V Standby | 11 |
| GND | 5 V Standby Return | 12 |
| 5VSB | 5 V Standby | 13 |
| G_DCOK_C | Global DCOK Collector | 14 |
| GPIOA6 | EEPROM Write Protect | 15 |
| G_DCOK_E | Global DC_OK Emitter (GND) | 16 |
| GND | Return GND for O/P Signal and I ² C communication | 17 |
| G_ACOK_C | Global AC_OK Collector | 18 |
| INH_EN | Turn Off Main Output | 19 |
| G_ACOK_E | Global AC_OK Emitter (GND) | 20 |

Note: Mating connector for SK2 is:
 LANDWIN
 (LWE PN: 2050S) Housing
 (LWE PN: 2053T) Contact
 CVILUX
 (CX PN: CI0120SD000) Housing
 (CX PN: CI01TD21PE0) Contact



Signal Output Signal Connectors (SK2)

CI0120P1HD0-LF

PIN ASSIGNMENT (CONTINUED)

LED INDICATORS

2 provided are clearly visible up to a 45 degree offset from vertical with office environment ambient lighting. The status is reflected in the indicator color.

The **DC_OK LED** shall light green if the DC output is within specification, and shall be off if the output falls out of specification.

The **AC_OK LED** is green if the AC within specification and off when AC out of specification.

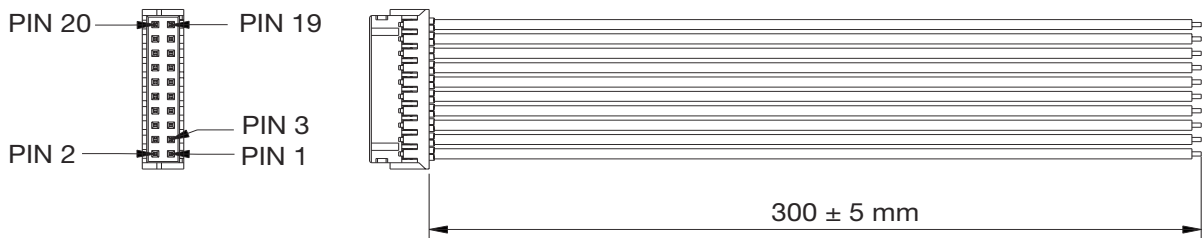
CONTROL SIGNALS

AC_OK open collector 0.5 V maximum at 10 mA. Both emitter and collector access provided.

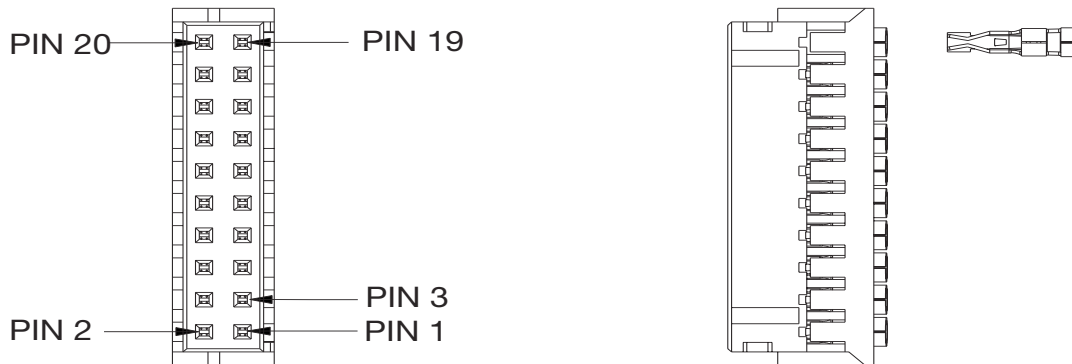
DC_OK open collector 0.5 V maximum at 10 mA. Both emitter and collector access provided.

PS_INHIBIT/ENABLE Signal 0.0 to 0.5 V contact closure, output OFF

OPTIONAL ACCESSORIES



Orderable kit part number: 73-788-001



Orderable kit part number: 73-788-002

MISCELLANEOUS SPECIFICATIONS

BURN-IN

100% Burn-in at 45 °C, at 80% to 90% load. Duration of burn-in determined by Quality Assurance Procedures.

MTBF

The power supply has a minimum MTBF of 300K hours using the Bell core 332, issue 6 specification @ 25 °C and 40 °C, ambient, at full load. With the power supply installed in a system in a 25 °C ambient environment and operating at full load, capacitor life shall be 10 years, minimum for all electrolytic capacitors contained within this power supply. The power supply shall demonstrate a MTBF level of > 500,000 hours.

QAV

Full QAV testing shall be conducted in accordance with Advanced Energy standards.

WARRANTY

Artesyn Embedded Power shall warrant the power supply to be free of defects in materials and workmanship for a minimum period of three years from the date of shipment, when operated within specifications. The warranty shall be fully transferable to the end owner of the equipment powered by the supply.



For international contact information,
visit [advancedenergy.com](https://www.advancedenergy.com).

powersales@aei.com (Sales Support)
productsupport.ep@aei.com (Technical Support)
+1 888 412 7832

ABOUT ADVANCED ENERGY

Advanced Energy (AE) has devoted more than three decades to perfecting power for its global customers. AE designs and manufactures highly engineered, precision power conversion, measurement and control solutions for mission-critical applications and processes.

Our products enable customer innovation in complex applications for a wide range of industries including semiconductor equipment, industrial, manufacturing, telecommunications, data center computing, and medical. With deep applications know-how and responsive service and support across the globe, we build collaborative partnerships to meet rapid technological developments, propel growth for our customers, and innovate the future of power.

PRECISION | POWER | PERFORMANCE | TRUST

Specifications are subject to change without notice. Not responsible for errors or omissions. ©2024 Advanced Energy Industries, Inc. All rights reserved. Advanced Energy®, AE® and Artesyn™ are U.S. trademarks of Advanced Energy Industries, Inc.