

ARTESYN MODULAR HIGH POWER SYSTEM

Up to 30,000 W



iHP12/15



iHP24/30

Advanced Energy's iHP configurable precision power system provides accuracy, resolution and stability as either a programmable voltage or current source. It can be configured for up to 8 outputs using a wide variety of plug-in modules that address a large range of voltages and currents. When operating at 480 VAC 3-phase nominal, and using the 12 kW modules, extra slots left available can be populated with the 3 kW single slot modules to provide up to 30 kW in the 8-slot racks and 15 kW in the 4-slot racks for up to 4 outputs.

Safety approvals secured by Advanced Energy eliminate the need for an isolation transformer in medical equipment. The iHP power system also has industrial safety approvals, including compliance to the SEMI F47 standard for semiconductor processing equipment.

The iHP offers developers either an analog or digital interface to their system supporting standard communications protocols, with specialized Isocomm modules. Default Isocomm provides Ethernet UDP, while optional Isocomm provides EtherCAT for use by Industrial and semiconductor manufacturing tools. A software GUI allows for easy configuration and user dashboard creation. For horticulture customers, detailed scheduling and control software is available. For non-medical applications, a smaller and lighter rack is now available using the same plug-in modules.

SPECIAL FEATURES

- 5 years manufacturer's warranty
- Multi output intelligent and modular high power system
- Standard 19" rack
- Outputs parallel up to 1600 A
- Outputs series up to 1000 V
- 100% digital control
- Outputs program as voltage or current source
- Air cooled
- User defined command profiles
- Versatile input configurable to:
 - Low line 180 to 264 VAC single phase and 3-phase
 - High line 342 to 528 VAC 3-phase
 - High line 540 to 660 VAC 3-phase (iHP24C)
- Medical Safety Approved on iHP12 and iHP24, not on iHP24S or iHP24C
- Analog Interface either 0-5 V or 0-10 V for both current and voltage. Compatible with, but not limited to Priva, Argus, TrollMaster and Hortimax controllers, In lighting applications

Note 1: Digital Ethernet UDP, RS485 or CAN. Optional internal EtherCAT Isocomm module is available. Command protocol is patterned to PMBus specification using a proprietary transaction protocol.

AT A GLANCE

Total Power

Up to 30 kW per 3U rack
Up to 180 kW in an 18U Cabinet

Input Voltage

iHP12, iHP24 and iHP24S:

180 to 264 VAC

342 to 528 VAC

Single or 3-Phase for iHP12

3-Phase for iHP24 and iHP24S

iHP15, iHP30, iHP30S:

432 to 528 VAC 3-Phase

iHP24C:

540 to 660 VAC

3-Phase for iHP24C

of Outputs

Up to 8

iHP

- Flexible digital control interfaces¹
- Semi F47 compliance
 - *iHP24L3A & iHP24H3A can support SEMI-F47 compliance for full load without derating
- Field upgradeable firmware
- Programmable slew rate
- Fast current slew rate up to 200 Hz
- Very low THD compared to LED Drivers when used in lighting applications

SAFETY

**SAFETY FOR ALL MODELS (except for iHP24S/
iHP30S and iHP24C models)**

- UL 62368-1
- CSA C22.2 No. 62368-1
- EN62368-1
- EN60601-1
- IEC60601-1
- UL 60601-1 1st Edition; ANSI/AAMI ES60601-1 (2005 + C1:09 + A2:10) “3rd Ed”
- CAN/CSA-C22.2 No. 60601-1 (2008)
- IEC60601
- CB Certificate and Report
- CE LVD (EN62368-1 + RoHS)

SAFETY FOR CANADIAN MODEL iHP24C3A ONLY

- UL60950-1 with UL62368-1
- CSA C22.2 No 62368-1

**SAFETY FOR iHP SHORT RACK iHP24S/30SH3A &
iHP24SL3A**

- UL 62368-1 Listed
- CSA 62368-1 Listed
- EN 62368-1
- IEC 62368-1
- CE (LVD+RoHS), EN 62368-1

iHP24/30 ELECTRICAL SPECIFICATIONS

Input Parameter	19" Rack 24/30 kW strapped as 3-phase 380/480 VAC Nominal (iHP24/30H3A, iHP24S/30SH3A)	19" Rack 24 kW strapped as 3-phase 208/240 VAC Nominal (iHP24L3A, iHP24SL3A)	19" Rack 24 kW strapped as 3-phase 600 VAC Nominal (iHP24C3A)
Input Range	342 VAC to 528 VAC	187.5 VAC to 264 VAC	540 VAC to 660 VAC
Nominal Input Voltage	380/480 VAC 480 VAC for iHP30 models	208/240 VAC	600 VAC
Number of Phases	3-phase (Wye or Delta) 4 wire total (3-phase and 1 protective earth ground)		3-phase Wye 5 wire total (3-phase, neutral and protective earth ground)
Frequency	47 to 63 Hz		
Phase Detection	Loss of phase will inhibit unit off. Housekeeping/comms must continue with phase loss.		
Max Current/Phase	45 A @ 342 VAC, 35 A @ 432 VAC 44 A @ 432 VAC for iHP30	84 A @ 187.5 VAC	29 A @ 312 VAC
Undervoltage Detection	Nominal input locked on at turn-on. Undervoltage shutdown at 15% below nominal. Turn-on at 12% below nominal. Not to interfere with SEMI F47 specs.		
Current Inrush	2.5 x Max input current		
Power Factor	> 0.98 @ full load and nominal line		
Harmonic Distortion	THD < 13%, PWHF < 22% (refer to EN 61000-3-12)		
Line Interruption	Designed to meet SEMI F47-0706, 53, 58, S14 at nominal input voltages (Non "S" models don't apply. Contact factory for SEMI F47 compliance on iHP30 models)		
Input Leakage Current	< 2.5 mA (Note for fixed condition 3rd edition leakage = 5 mA)		
Power Switch	Front panel power switch provided		
Input Protection	Internal fuse (not user serviceable)		
Input Overvoltage Protection	Up to 115% of nominal input shall not damage unit		
Phase Imbalance	≤ 5%		
Rack Parallel	Up to 6 racks (144 kW)		
Efficiency	94.1% @ 3P 380 VAC 50% Load 94.8% @ 3P 480 VAC 50% Load	94.2% @ 3P 208 VAC 50% Load 94.7% @ 3P 240 VAC 50% Load	> 90% @ 3P 600 VAC full load
Standby Voltage/Current	5 V/1 A		
Standby Regulation	4.75 to 5.25 V		

TOTAL HARMONIC DISTORTION COMPARISON



% Load	600 W Driver	iHP24H3A and iHP24SH3A
50%	14.00%	2.78%
75%	13.10%	1.16%
100%	10.70%	0.80%

Notes:

1. 600 W driver data is taken from published datasheet.
2. iHP24H3A model data was captured at a nominal input of 480 V 3-phase at room ambient.
3. The input voltage of 277 VAC is the single phase equivalent used when operating on 2 phases of a 480V 3-phase utility service.

SAFETY TABLE

Model Number	Model Code	Module Nominal Voltage	Safety Compliance	Maximum Total Voltage Allowed
73-936-0012	SL	≤ 48 V	Medical 2MOPP ¹	300 V
73-936-0024	SQ		Medical 2MOOP ² , ITE	400 V
73-936-0048	SW			
73-936-0080	S8	≥ 80 V	Medical 2MOPP	600 V
73-936-0125	S1		Medical 2MOOP	800 V
73-936-0200	SA		Medical 2MOOP	800 V
73-936-0250	S2		ITE	1000 V

Notes:

1. 2MOPP or 2 × MOPP (Means of Patient Protection)
2. 2MOOP or 2 × MOOP (Means of Operator Protection)

IHP12/15 ELECTRICAL SPECIFICATIONS

Input Parameter	19" Rack 12 kW strapped as 1-phase 200/220/230/240 VAC Nominal (iHP12L1A)	Type: 19" Rack 12 kW strapped as 3-phase 200/208/240 VAC Nominal (iHP12L3A)	Type: 19" Rack 12/15 kW strapped as 3-phase 380/480 VAC Nominal (iHP12/15H3A)
Input Range	180 VAC to 264 VAC	180 VAC to 264 VAC	342 VAC to 528 VAC
Nominal Input Voltage	200/220/230/240 VAC	200/208/240 VAC	380/480 VAC 480 VAC for iHP15 models
Number of Phases	1-phase 3-wire total (2-phase and 1 protective earth ground)	3-phase (Wye or Delta) 4-wire total (3-phase and 1 protective earth ground)	
Frequency	47 to 63 Hz		
Phase Detection	NA	Loss of phase will inhibit unit off. Housekeeping/comms must continue with phase loss.	
Max Current/Phase	75 A @ 180 VAC	44 A @ 180 VAC	23 A @ 342 VAC 19 A @ 432 VAC 20 A for iHP15 models
Undervoltage Detection	Nominal input locked on at turn-on. Undervoltage shutdown at 15% below nominal. Turn-on at 12% below nominal. Not to interfere with SEMI F47 specs.		
Current Inrush	2.5 x Max input current		
Power Factor	> 0.99 @ full load and nominal line	> 0.98 @ full load and nominal line	
Harmonic Distortion	THD < 3.5%, PWHD < 22% (refer to EN 61000-3-12)		
Line Interruption	Designed to meet SEMI F47-0706, 53, 58, S14 at nominal input voltages		
Input Leakage Current	< 1.25 mA		<2.5 mA
Power Switch	Front panel power switch provided		
Input Protection	Internal fuse (not user serviceable)		
Input Overvoltage Protection	Up to 115% of nominal input shall not damage unit		
Phase Imbalance	NA	≤ 5%	≤ 5%
Rack Parallel	Up to 6 racks (72 kW)		
Efficiency	> 91% @ 1P 240 VAC full load > 90% @ 1P 208/200 VAC full load	> 91% @ 3P 240 VAC full load > 90% @ 3P 208/200 VAC full load	> 90% @ 3P 380 VAC full load > 91% @ 3P 480 VAC full load
Standby Voltage/Current	5 V/1 A		
Standby Regulation	4.75 to 5.25 V		

EMC/IMMUNITY

EMC	ALL MODELS (except Canadian model iHP24C3A)
ESD	EN61000-4-2 (IEC1000-4-2)
Fast Transients	EN61000-4-4 (IEC1000-4-4)
Surge Immunity	EN61000-4-5 (IEC1000-4-5)
Conducted Immunity	EN61000-4-6 (IEC1000-4-6)
Radiated Immunity	EN61000-4-3 (IEC1000-4-3)
Power Frequency Magnetic Field	EN61000-4-8
Voltage Dips, Short Interruptions and Voltage Variations	EN 61000-4-34
Conducted Emission	EN55011, FCC CFR 47, Part 15, Subpart B
Radiated Emission	EN55011, FCC CFR 47, Part 15, Subpart B

EMC/IMMUNITY (CONTINUED)

EMC	CANADIAN MODEL iHP24C3A ONLY
ESD	IEC 61000-4-2 Level 4 Criteria A, Air discharge 15 kV, Contact Discharge 8 kV
Fast Transients	IEC 61000-4-4 Level 3 Criteria A 2 kV
Surge Immunity	IEC 61000-4-5 Level 3 Criteria A, Common Mode 2 kV, Differential Mode 1 kV
Conducted Immunity	IEC 61000-4-6 Level 3 Criteria A; 150 kHz to 80 MHz, 10 Vrms
Radiated Immunity	IEC 61000-4-3 Level 3 Criteria A; 80 MHz to 1 GHz, 10 V/M, 80% Modulation (1 kHz)
Power Frequency Magnetic Field	IEC 61000-4-8 Criteria A; 30A/Meter
Voltage Dips, Short Interruptions and Voltage Variations	IEC 61000-4-11 100% dip, 1 cycle (20 ms), Self Recoverable (Hold Up only 14 ms on Short Rack and Liquid Cooled)
Conducted Emission	EN55011, FCC CFR 47, Part 15, Subpart B
Radiated Emission	EN55011, FCC CFR 47, Part 15, Subpart B

ALL MODELS (except Canadian model iHP24C3A, iHP24S/30SH3A & iHP24SL3A)

Category	Standard	Frequency	Level / Limits	PSU Performance Criteria ¹
Radiated Emissions	EN 55011/CISPR11	30 MHz to 1 GHz	Class A	5dB Margin
	FCC CFR 47, Part 15, Subpart B	30 MHz to 1 GHz >1 GHz (see standard)	Class A	5dB Margin
Conducted Emissions	EN 55011/CISPR11	150 kHz to 30 MHz	Class A	5dB Margin
Power Line Harmonics ²	EN 61000-3-12	See standard	See standard	-
Voltage Fluctuations ²	EN 61000-3-11	See standard	See standard	-
Radiated Immunity	EN 61000-4-3	80 MHz to 2 GHz	10 V/meter	A
ESD	EN 61000-4-2		8 kV contact, 15 kV Air	A
Electrical Fast Transient	EN 61000-4-4		+/- 4 kV	A
Surge AC	EN 61000-4-5		2 kV DM, 4 kV CM	A
	IEEE C62.41		2 kV DM, 2 kV CM	A
			6 kV, CM & DM	Fail Safe
Conducted Susceptibility	EN 61000-4-6	150 kHz to 80 MHz	10 Vrms	A
Voltage Dips and Sags ³	EN 61000-4-34 SEMI F47	>95% reduction for	10 mS	A
		>30% reduction for	500 mS	A
		>95% reduction for	500 mS	C
		20% reduction for	5000 ms	A
		30% reduction for	500 ms	A
		50% reduction for	200 ms	A
		60% reduction for	200 ms	B

Notes:

1. Performance Criteria as defined by EN 300 386 V1.3.3

2. Applies to AC power supplies only. Short Rack and Short Rack inside Liquid Cooled rack do not meet 1 cycle hold-up.

3. 24 kW load conducted EMI and 12 kW load radiated EMI tests using 48 V modules only. 3 kW load comparative test for other module variants is ok.

iHP SHORT RACK (iHP24S/30SH3A & iHP24SL3A)

Category	Standard	Frequency	Level / Limits	PSU Performance Criteria ¹	
Radiated Emissions	EN 55011/CISPR11	30 MHz to 1 GHz	Class A	-	
	FCC CFR 47, Part 15, Subpart B	30 MHz to 1 GHz	Class A	-	
		>1 GHz (see standard)		-	
Conducted Emissions	EN 55011/CISPR11	150 kHz to 30 MHz	Class A	-	
Power Line Harmonics ²	EN 61000-3-12	See standard	See standard	-	
Voltage Fluctuations ²	EN 61000-3-11	See standard	See standard	-	
Radiated Immunity	EN 61000-4-3	80 MHz to 2 GHz	10 V/meter	A	
ESD	EN 61000-4-2		8 kV contact,	A	
			15 kV Air		
Electrical Fast Transient	EN 61000-4-4		+/- 4 kV	A	
Surge AC	EN 61000-4-5		2 kV DM, 4 kV CM	A	
			IEEE C62.41	2 kV DM, 2 kV CM	A
				6 kV, CM & DM	Fail Safe
Conducted Immunity	EN 61000-4-6	150 kHz to 80 MHz	10 Vrms	A	
Voltage Dips and Sags ³	EN 61000-4-34		>95% reduction for	0.5 Cycle	A
			100% reduction for	0.5 Cycle (45deg phase angle)	A
			100% reduction for	1 Cycle (0deg phase angle)	C
			30% reduction for	25/30 Cycles ⁴	C
			30% reduction for	25/30 Cycles ⁴ (0deg phase angle)	C
			>95% reduction for	250/300 Cycles ⁵	C
			100% reduction for	250/300 Cycles ⁵	C
Power Frequency Magnetic Field	IEC 61000-4-8	See standard	See standard	-	

Notes:

1. Performance criteria of EN61000-4-X standards as defined by EN55024
2. Applies to AC power supplies only.
3. 24 kW load conducted EMI and 12 kW load radiated EMI tests using 48 V modules only. 3 kW load comparative test for other module variants is ok.
4. 25 cycles for 50 Hz test, 30cycles for 60 Hz test
5. 250 cycles for 50Hz test, 300cycles for 60 Hz test

OUTPUT – GENERAL SPECS

Parameter								
Module Code	SL	SQ	ST	SW	S8	S1	SA	S2
# Outputs	1	1	1	1	1	1	1	1
Nominal O/P (V)	12	24	32	48	80	125	200	250
Max Power (W)	2400	2880	2880	3000	3000	3000	3000	3000
O/P Current Range (A)	0 - 200	0 - 120	0 - 90	0 - 62.5	0 - 37.5	0 - 24	0 - 15.0	0 - 12
Power Density (W/cu-in)	32.5	39.0	39.0	40.6	40.6	40.6	39	40.6
Module Input Voltage	400 V							
Module Operating Temp	0°C to +65°C; Baseplate Temp TBD							
Series Operation	250 V modules can be connected in series up to 800 V for Medical and 1000 V for ITE							
Parallel Operation	Up to 8 modules can be paralleled in 1 rack, with up to 6 racks connected in parallel. Single Wire Parallel connection will be provided as part of configuration							
Parameter								
Module Code	TW				T3			
# Outputs	1				1			
Nominal O/P (V)	50				300			
Max Power (W)	12000				12000			
O/P Current Range (A)	0 - 270				0 - 50			
Power Density (W/cu-in)	TBA				TBA			
Module Input Voltage	395 V ± 5 V							
Module Operating Temp	0°C to +65°C							
Series Operation	Can be connected in series up to 720 V							
Parallel Operation	Up to two (2) modules can be paralleled in one (1) rack, with up to six (6) racks connected in parallel. Single Wire Parallel connection will be provided as part of configuration.							

OUTPUT – MODULE IN VOLTAGE SOURCE MODE

Voltage Source								
Module Code	SL	SQ	ST	SW	S8	S1	SA	S2
Nominal Output (V)	12	24	32	48	80	125	200	250
Setting Range (V)	0.6 - 14.4	1.2 - 28.8	1.6 - 38.4	2.4 - 57.6	4.0 - 96.0	6.25 - 150.0	10.0 - 240.0	12.5 - 300.0
Low Frequency RMS Ripple (mV)	24	48	64	96	160	250	500	500
Line Regulation (mV)	12	24	32	48	80	125	200	250
Load Regulation (mV)	24	48	64	96	160	250	400	500
P-P Ripple (mV)	60	120	160	240	400	625	1250	1250
Drift (Temp Stability)	±0.05% of I _{out} Rated over 8 hours, after 30 minute warm up, constant Line, Load and Temp							
Temp Coefficient (PPM/°C)	200							
Pgm Accuracy (mV)	Digital: 0.1% of Nominal Output Voltage; Analog: 1.0% of Nominal Output Voltage							
Pgm Resolution (mV)	SL=TBD; SQ=1; SW=2; S8=8; S1=6; S2=21							
Meas Accuracy (mV)	0.2% + 0.2% of Nominal Output Voltage							
Meas Resolution	SL=TBD; SQ=1; SW=2; S8=8; S1=6; S2=21							
Transient Response	Max 5.0% deviation from current set point must recover within 1ms for a 50% step load.							
Current Sense Method	Internal Shunt; External Shunt can be used for better temperature stability.							
Voltage Source								
Module Code	TW				T3			
Nominal Output (V)	50				300			
Setting Range (V)	2.5 - 60				15.0 - 360			
Low Frequency RMS Ripple (mV)	100				600			
Line Regulation (mV)	50				300			
Load Regulation (mV)	100				600			
P-P Ripple (mV)	250				1500			
Drift (Temp Stability)	±0.05% of V _{out} rated over 8 hours, constant line and load.							
Temp Coefficient (PPM/°C)	200							
Pgm Accuracy (mV)	Digital: 0.1% of Nominal Output Voltage / Analog: 1.0% of Nominal Output Voltage							
Pgm Resolution (mV)	2				TBA			
Meas Accuracy (mV)	0.2% of Set Output + 0.2% of Nominal Output Voltage							
Meas Resolution	TBA							
Transient Response	Recovery time of 1 ms (See Section 5.4.2 for the transient conditions)							
Current Sense Method	Internal Shunt							

OUTPUT – MODULE IN CURRENT SOURCE MODE

Current Source - Programmable load compensation available for resistive and inductive loads; capacitive load applications; and LED drive applications								
Module Code	SL	SQ	ST	SW	S8	S1	SA	S2
Nominal Output (V)	12	24	32	48	80	125	200	250
Setting Range (A)	0 - 200	0 - 120	0 - 90	0 - 62.5	0 - 37.5	0 - 24	0 - 15	0 - 12
RMS Ripple (mA)	200	120	90	62.5	37.5	24	15	12
Line Regulation (mA)	200	120	90	125	93.75	48	50	24
Load Regulation (mA)	800	480	375	250	150	96	56	48
P-P Ripple (mA)	N/A							
Drift (Temp Stability)	±0.05% of I_{out} Rated over 8 hours, after 30 minute warm up, constant Line, Load and Temp							
Temp Co-efficient (PPM/°C)	SL, SQ = 300 PPM; All other modules are 200 PPM. Temp Co-efficient at rack level is [Temp Co-efficient (module level)] + [4500 PPM of $I_{out-max}$]							
Pgm Accuracy (A)	0.7% digital, 1.3% analog of rated output max							
Pgm Resolution (mA)	79.2	26.4		13.2	10	5.2	2.6	2.6
Meas Accuracy	0.7% + 0.7% of Rated Output Max							
Meas Resolution (mA)	79.2	26.4		13.2	10	5.2	2.6	2.6
Transient Response	0-63% output current change in 7.5 ms, residual value 1%, settling time 35 ms							
Current Sense Method	Internal Shunt / External Shunt							
Current Source - Programmable load compensation available for resistive and inductive loads; capacitive load applications; and LED drive applications								
Module Code	TW				T3			
Nominal Output (V)	50				300			
Setting Range (A)	0 - 270				0 - 50			
RMS Ripple (mA)	270				50			
*Line Regulation (mA)	270				100			
*Load Regulation (mA)	1200				200			
Pgm Resolution (mA)	20				TBA			
Meas Resolution (mA)	TBA				TBA			
*Pgm Accuracy (A)	Digital: 0.7% of Rated Output Max / Analog: 1.3% of Rated Output Max (1% to 100% O/P Current adjustability)							
*Meas Accuracy	0.7% + 0.7% of Rated Output Max							
*Drift (Temp Stability)	±0.05% of $I_{out-max}$ over 8 hours, constant line and load.							
Temp Coefficient – Module Level (PPM of $I_{out-max}$ / °C)	300				300			
Temp Coefficient – Rack Level	[Temp Coefficient (module level)] + [4500ppm of $I_{out-max}$]							
Current Overshoot-Undershoot	+/- 5% of $I_{out-max}$							
**Transient Response Time	Recovery time of 35 ms (See Section 5.4.2 for the transient conditions)							
Current Sense Method	Internal Shunt							

ENVIRONMENTAL SPECIFICATIONS

Operating Conditions	ALL MODELS (Unless Otherwise Specified)
Operating Temperature	0°C to +50°C at 100% rated load.
Storage Temperature	-40°C to +85°C. For Liquid Cooled models, liquid must be drained before storage
Operating Humidity	20% to 90% non condensing
Storage Humidity	10% to 95% non condensing
Operating Altitude	Up to 9,842 feet above sea level (3,000 meters)
Storage Altitude	Up to 30,000 feet above sea level (9,144 meters)
Vibration	Operating Sinusoidal Vibration MIL-STD-810G Method 528 Procedure I (Type 1): NEBS Office Vibration Environment, Alternate Procedure Operating Random Vibration: IPC-9592B Class 1 Non-Operating Vibration (Packaged): IPC-9592B Class 1; MIL-STD-810G, Method 514.6, Procedure 1, Category 7, Table 514.6C-VII General Exposure
Shock	MIL-STD-810G Method 516.6 Procedures I, II, IV, VI
Shipping and Handling	NSTA for <100 lbs; MIL-STD-2073-1 >100 lbs
Cooling and Audible Noise	<65 dBA with 80% load @ 30°C at nominal input voltage with Smart Fan algorithm to be optimized based on module and rack thermal sensors. When modules are inhibited via software control, the fan speed is reduced to idle and acoustic noise is <46 dBA. With modules off via front panel switch fans are at idle for 1 min, and off for 9 min.
Ingress Protection	Fan Cooled = IP20
Pollution Degree	2
RoHS Compliance	Yes

ORDERING INFORMATION

CASE CODE		MODULE CODES		PARALLEL/SERIES CASE CODE		CONF CODE	MOD CODE
iHP**XYZA-		-XVZ* (x4/x8)		-XX-**		-X	-XXX
Case Decoder	iHP**XYZA	Module Decoder	XVZ	First Digit	Second Digit	Special Configuration	Factory Assigned
** = Case Power		X = Output Type		0 = None	0 = None	Any Alpha Characters Except "C"	
12 = 12 kW 19" Rack 15 = 15 kW 19" Rack		S = Single O/P (1-Slot)		1 = Slot 1&2	P = Parallel		
24 = 24 kW 19" Rack 30 = 30 kW 19" Rack		T = Single O/P (3-Slot)		2 = Slot 2&3	S = Series		
24S = 24 kW 19" Rack Short				3 = Slot 3&4	1 = Combo 2 P/S		
30S = 30 kW 19" Rack Short		V = Nominal Voltage		4 = Slot 4&5	2 = Combo 2 S/P		
		A = 200V		5 = Slot 5&6	3 = Combo 3 P/P/S		
X = Voltage Range		B = Future		6 = Slot 6&7	4 = Combo 3 P/S/P		
L = Low Range*180-264		C = Future		7 = Slot 7&8	5 = Combo 3 P/S/S		
H = High Range 342-528 432-528 for iHP15/30		D = Future		8 = Slot 1,2&3	6 = Combo 3 S/P/P		
C = Canadian 540-660		L = 12 V		9 = Slot 1,2,3&4	7 = Combo 3 S/P/S		
		Q = 24 V		A = Slot 1,2,3,4&5	8 = Combo 3 S/S/P		
Y = Input Phase		T = 32 V		B = Slot 1,2,3,4,5&6	9 = Combo 4 P/P/P/S		
1 = Single Phase		W = 48 V (50 V for 12 kW)		C = Slot 1,2,3,4,5,6&7	A = Combo 4 P/P/S/P		
3 = 3-Phase		8 = 80 V		D = Slot 1,2,3,4,5,6,7&8	B = Combo 4 P/P/S/S		
		1 = 125 V		E = Slot 1&2; 3&4	C = Combo 4 P/S/P/P		
Z = Cooling		2 = 250 V		F = Slot 1&2; 3&4; 5&6	D = Combo 4 P/S/P/S		
A = Air Cooled		3 = 300 V (12 kW ONLY)		G = Slot 1&2; 3&4; 5&6; 7&8	E = Combo 4 P/S/S/P		
				H = Slot 1,2&3; 4&5	F = Combo 4 P/S/S/S		
A = Accessory Options		Z = Mode		K = Slot 1,2&3; 4,5&6	H = Combo 4 S/P/P/S		
Blank = Standard Configuration		Blank = Standard		L = Slot 1,2&3; 4,5&6; 7&8	J = Combo 4 S/P/S/P		
C = Factory Configured and Tested		P = Precision		M = Slot 1,2,3&4; 5&6	K = Combo 4 S/P/S/S		
1 = Standard Configuration with ECAT Isocomm				N = Slot 1,2,3&4; 5&6; 7&8	L = Combo 4 S/S/P/P		
2 = Factory Configured and Test with ECAT Isocomm				P = Slot 1,2,3&4; 5,6&7	M = Combo 4 S/S/P/S		
3-9 = Future				R = Slot 1,2,3&4; 5,6,7&8	N = Combo 4 S/S/S/P		
				S = Slot 1,2,3,4&5; 6&7			
				T = Slot 1,2,3,4&5; 6,7&8			
				U = Slot 1,2,3,4,5&6; 7&8			
				Z=Special Defined by MOD Code			
				-** is allowed for secondary series/parallel code			
				1 = Groups 1&2	P = Parallel		
				8 = Groups 1,2&3	S = Series		
				9 = Groups 1,2,3&4	1 = Combo 2 P/S		
				E = Groups 1&2; 3&4	2 = Combo 2 S/P		

*Lowest possible input for the 24 kW version is 187.5 VAC

ORDERING INFORMATION (CONTINUED)

MODEL NUMBER SHORTCUT

For repeated like modules in parallel or series, instead of listing all the same modules separated by a “-”, you can simply list the module once and then follow by the number of times it repeats enclosed in parenthesis.

For example:

iHP24H3A-SW-SW-SW-SW-SW-SW-S8-S8-00

would become:

iHP24H3A-SW(6)-S8(2)-00

A model number example for iHP30:

iHP30H3A-TW-T3-SW-S8-00

A same model as above but with EtherCAT interface for iHP30:

iHP30H3A1-TW-T3-SW-S8-00

PART NUMBER INFORMATION

Rack/Module	Description	Status
RACK		
73-958-0001	19" 12kW Case High Line 3-Phase Air (iHP12H3A)	Released
73-958-0001L	19" 12kW Case Low Line 3-Phase Air (iHP12L3A)	Released
73-958-0001S	19" 12kW Case Low Line 1-Phase Air (iHP12L1A)	Released
73-958-0001U	19" 15kW Case High Line 3-Phase Air (iHP15H3A) Ultra Power	Released
73-959-0001	19" 24kW Case High Line 3-Phase Air (iHP24H3A)	Released
73-959-0001L	19" 24kW Case Low Line 3-Phase Air (iHP24L3A)	Released
73-959-0001Z	19" 24kW Case 600V Canadian 3-Ph Y Air (iHP24C3A)	Released
73-959-0001U	19" 30kW Case High Line 3-Phase Air (iHP30H3A) Ultra Power	Released
73-969-0001	19" 24kW Short Case High Line 3-Phase Air (iHP24SH3A)	Released
73-969-0001L	19" 24kW Short Case Low Line 3-Phase Air (iHP24SL3A)	Released
73-969-0001U	19" 30kW Short Case High Line 3-Phase Air (iHP30SH3A) Ultra Power	Released
3KW MODULES		
73-936-0012	12V 2400W Output Module (SL)	Released
73-936-0024	24V 2880W Output Module (SQ)	Released
73-936-0032	32V 3000W Output Module (ST)	Released
73-936-0048	48V 3000W Output Module (SW)	Released
73-936-0080	80V 3000W Output Module (S8)	Released
73-936-0125	125V 3000W Output Module (S1)	Released
73-936-0200	200V 3000W Output Module (SA)	Released
73-936-0250	250V 3000W Output Module (S2)	Released
12KW MODULES		
73-938-0050	50V 12000W Output Module (TW)	Released
73-938-0300	300V 12000W Output Module (T3)	Released
ACCESSORIES		
73-778-001	3-Phase Low Line Config Kit	Released
73-778-002	1 Phase Low Line Config Kit	Released
73-778-003	Module Accessory Kit	Released
73-778-004	2X Parallel Module Accessory Kit	Released
73-778-005	3X Parallel Module Accessory Kit	Released
73-778-006	4X Parallel Module Accessory Kit	Released
73-778-007	5X Parallel Module Accessory Kit	Released
73-778-008	6X Parallel Module Accessory Kit	Released
73-778-009	7X Parallel Module Accessory Kit	Released
73-778-010	8X Parallel Module Accessory Kit	Released
73-778-011	Initial Series Module Accessory Kit	Released
73-778-012	Subsequent Series Module Accessory Kit	Released
73-778-013	CAN/RS485 Terminator	Released
73-778-016	3-Phase High Line Config Kit	Released
73-778-017	4X Double P with 2X Single S	Released
73-778-022	Blank Panel 73-778-022	Released
73-778-025	2X Parallel 12kW Module Kit	Released
73-778-026	iHP24 Cover Kit	Released
73-778-027	iHP12 Cover Kit	Released
73-778-028	2X Double P with 2X Single S	Released
73-778-029	iHP 8X IPROG Cable Assembly	Released

PART NUMBER INFORMATION

Rack/Module	Description	Status
ACCESSORIES		
73-778-030	iHP 4X IPROG Cable Assembly	Released
73-778-032-V3A	iHP12 Isocomm Board V3A	Released
73-778-033-V3A	iHP24 Isocomm Board V3A	Released
73-778-034	High Voltage Output Terminal Cover Kit	Released
73-778-036	12kW Series Module Accessory Kit	Released
73-778-037	iHP Magnetic Air Filter	Released
73-778-049	Parallel two 12kW to two 3kW Accessory Kit	Released
73-778-050	iHP12 Module Cover with 4X 3kW modules	Released
73-778-051	iHP12 Module Cover with 1X 12kW modules	Released
73-778-052	iHP12 Isocomm Board + EtherCAT	Released
73-778-053	iHP24 Isocomm Board + EtherCAT	Released
73-778-054	Parallel one 12kW to one 3kW Accessory Kit	Released
73-778-055	iHP 3kW Boot Cover	Released
73-778-056	iHP 12kW Boot Cover	Released
73-778-057	iHP 15kW Boot Cover	Released

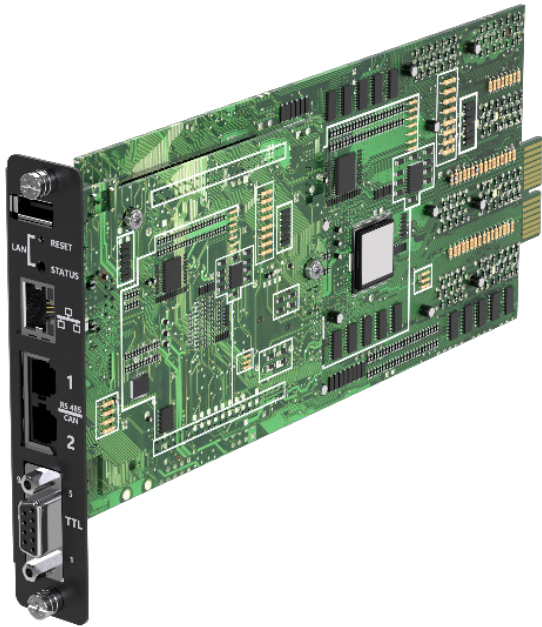
Model	Weight
73-959-0001/0001L/0001U iHP24/30	36.0 kg
73-959-0001Z iHP24C	35.0 kg
73-958-0001/0001L/0001S iHP12 73-958-0001U iHP15	22.2 kg
73-936-0012 Module 3kW	2.2 kg
All other 3 kW Module	2.0 kg
73-938-0050 Module 12kW	5.95 kg
73-969-0001/0001L iHP24S Short Rack; 73-969-0001U iHP30S Short Rack	28.5 kg
73-938-0300 Module 12kW 300V	5.1 kg
73-938-0050 Module 12kW 50V	6 kg
73-936-0024 Module 3kW 24V	2.2 kg
73-936-0200 Module 3kW 200V	2 kg

ISOCOMM OPTIONS

Default Isocomm Board

73-788-032-V3A: iHP12 Isocomm Board V3A

73-788-033-V3A: iHP24 Isocomm Board V3A

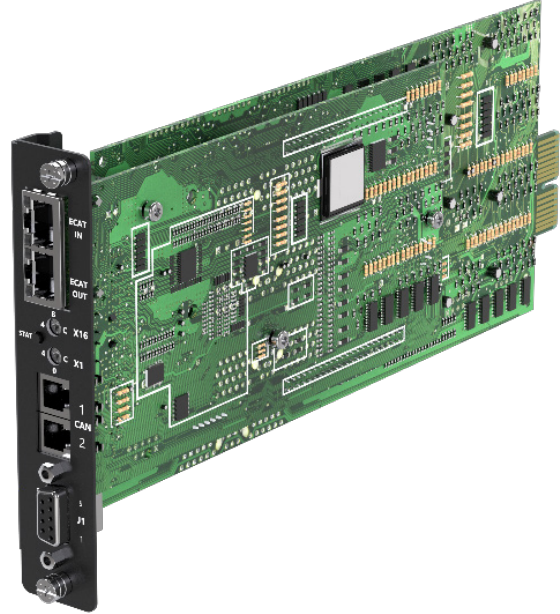


Default iHP comes with an Ethernet, RS485 and CAN communication interface. It uses the standard UDP communication method and many available command codes are based on PMBus™ protocol, although some changes have been made to better fit the UDP transport mechanism. UDP was chosen over TCP for communication speed considerations and is used for industrial applications and some Magnet drive controls. AEI has released some external communication dongles that will allow adoption of MODBus and various other popular protocols

Optional Isocomm Board with EtherCAT

73-788-052: iHP12 Isocomm Board + EtherCAT

73-788-053: iHP24 Isocomm Board + EtherCAT



An optional interface has been designed to support EtherCAT communication.

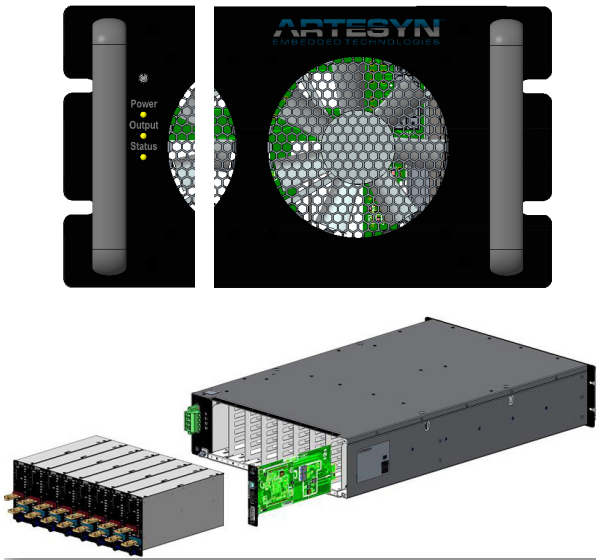
EtherCAT is a high-performance protocol tailored for real-time industrial applications, offering faster communication and better synchronization than standard Ethernet. While Ethernet is versatile and widely used for general networking, it may not meet the stringent requirements of time-sensitive automation tasks. The choice between EtherCAT and Ethernet depends on the specific needs of the application, including speed, complexity, and real-time performance requirements.

Note: Hardware and Software specification details are available for download through the AEI website.

CASE SPECS - OUTLINE DETAIL

Front Panel Standard Markings

(Standard for both 12/15 kW and 24/30 kW)



Input and Comms Standard Markings

View of iHP24L/H, iHP30H, iHP24SL/H, iHP30SH, iHP12L/H and iHP15H shown on top, iHP24C shown on bottom. Comms interface is horizontal on the iHP12L/H and iHP15H. See mechanical drawings for more details.



Condition	POWER LED	OUTPUT LED	SYSTEM STATUS LED
No AC	OFF	OFF	OFF
ISOCOMM Start-Up Boot Load	BLINKING GREEN	OFF	OFF
SLEEP Mode (ON/OFF switch)	AMBER	OFF	OFF
Global Inhibit	SOLID GREEN	BLINKING GREEN	OFF
AC GOOD	SOLID GREEN	X	X
AC FAULT (OV, UV)	SOLID RED	OFF	SOLID RED
Output GOOD	SOLID GREEN	SOLID GREEN	SOLID GREEN
Auto-recoverable Fault (OTP)	SOLID GREEN	OFF	SOLID AMBER
Latching Fault (OVP, UVP) or Internal Fault	SOLID GREEN	OFF	SOLID RED
FAN FAIL	SOLID GREEN	OFF	BLINKING RED
BOOTLOADING	X	OFF	BLINKING AMBER

MODULE INTERFACE DETAIL (SAME FOR BOTH "S" AND "T" MODULES)

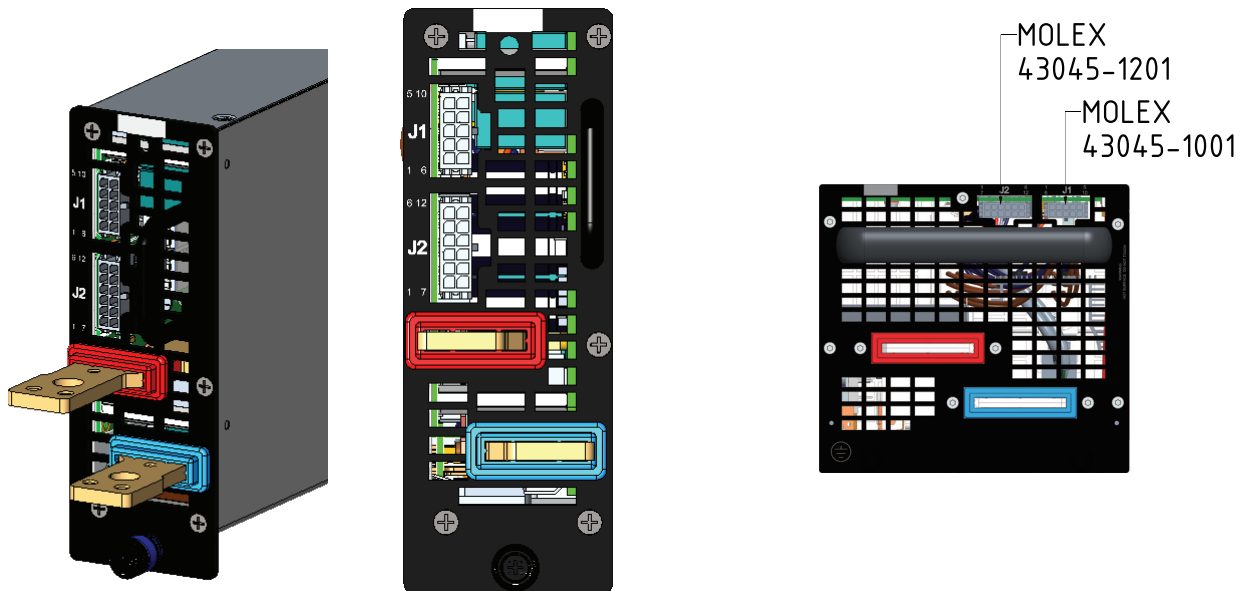
Module J1 Signals

Pin #	Function	Function	Pin #
5	4-20mA_IPROG	SYS_M_FAULT#	10
4	0-5V_IPROG	SYS_M_ENABLE#	9
3	0-10V_IPROG	SYS_RTN	8
2	0-5V_VPROG	SYS_M_INHIBIT	7
1	0-10V_VPROG	4-20mA_VPROG	6

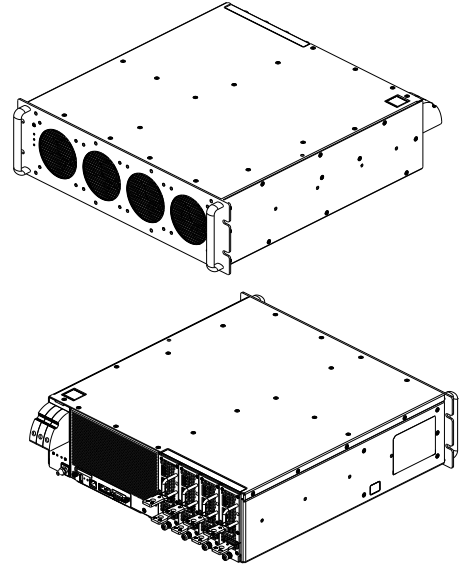
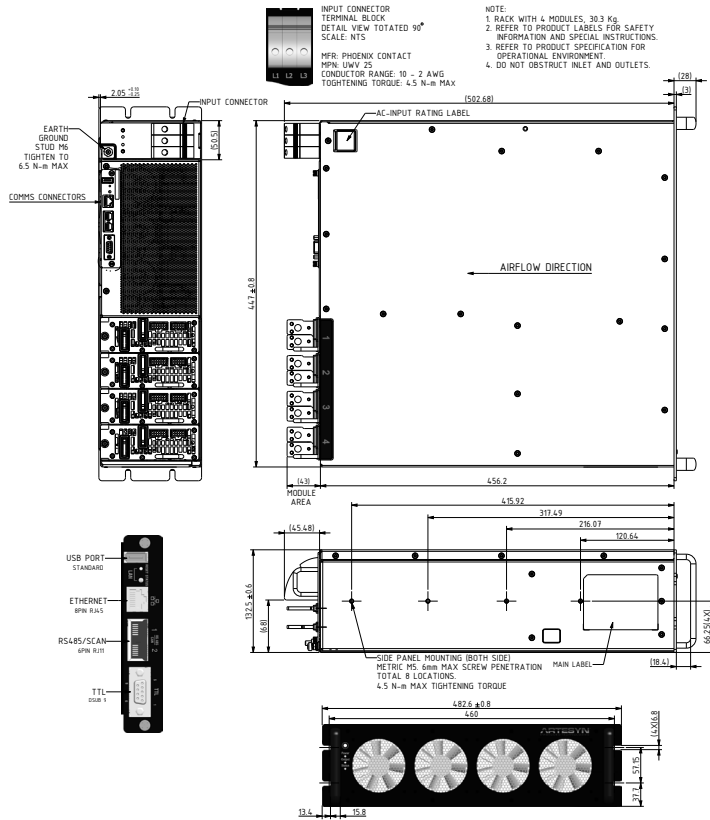
Module J2 Signals

Pin #	Function	Function	Pin #
6	NOT CONNECTED	ISHARE	12
5	IMON	VMON	11
4	D_RTN	ISHARE	10
3	EXT_ISENSE+	EXT_ISENSE-	9
2	D_RTN	V_SNS-	8
1	V_SNS+	D_RTN	7

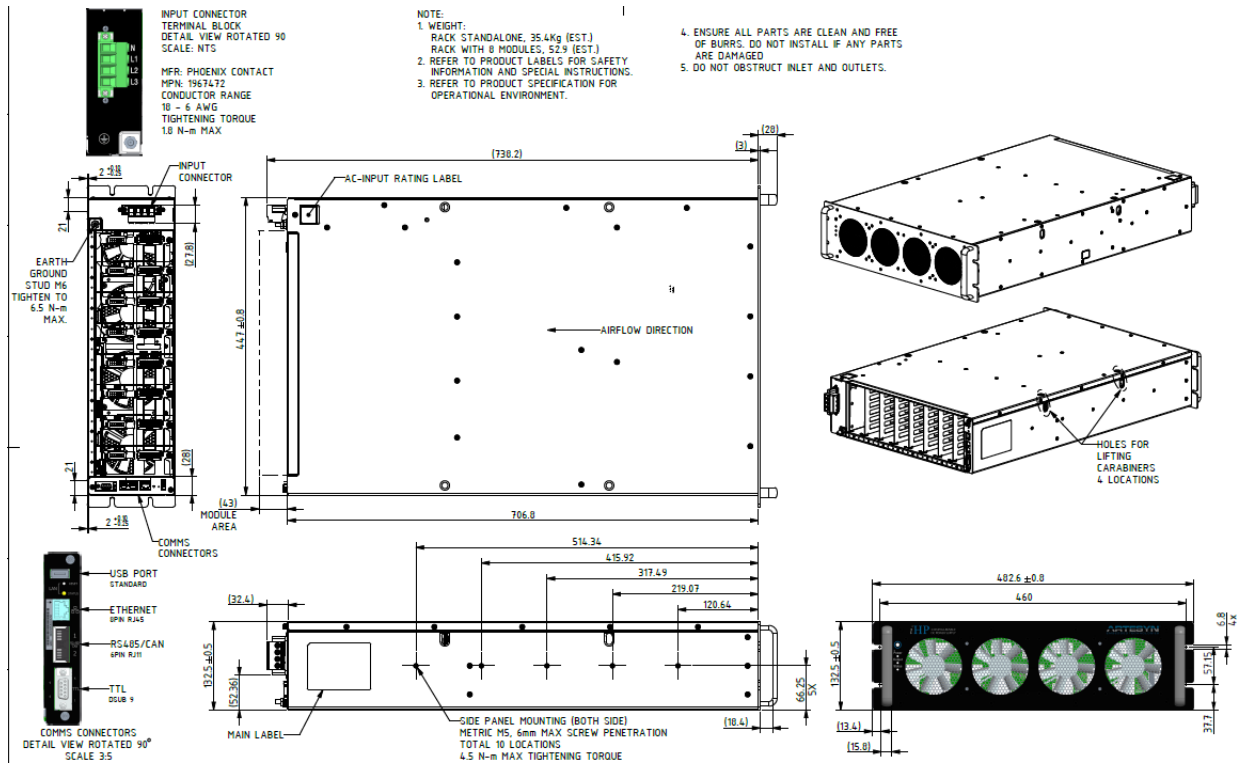
J1 mating housing Molex Micro-fit MPN: 43025-1000
 J2 mating housing Molex Micro-fit MPN: 43025-1200
 Crimp Terminal AWG 20-24
 Crimp Terminal Molex MPN: 43030-0002



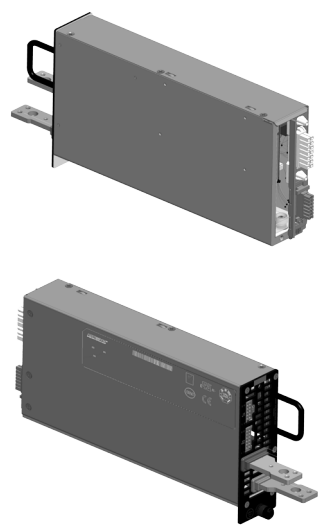
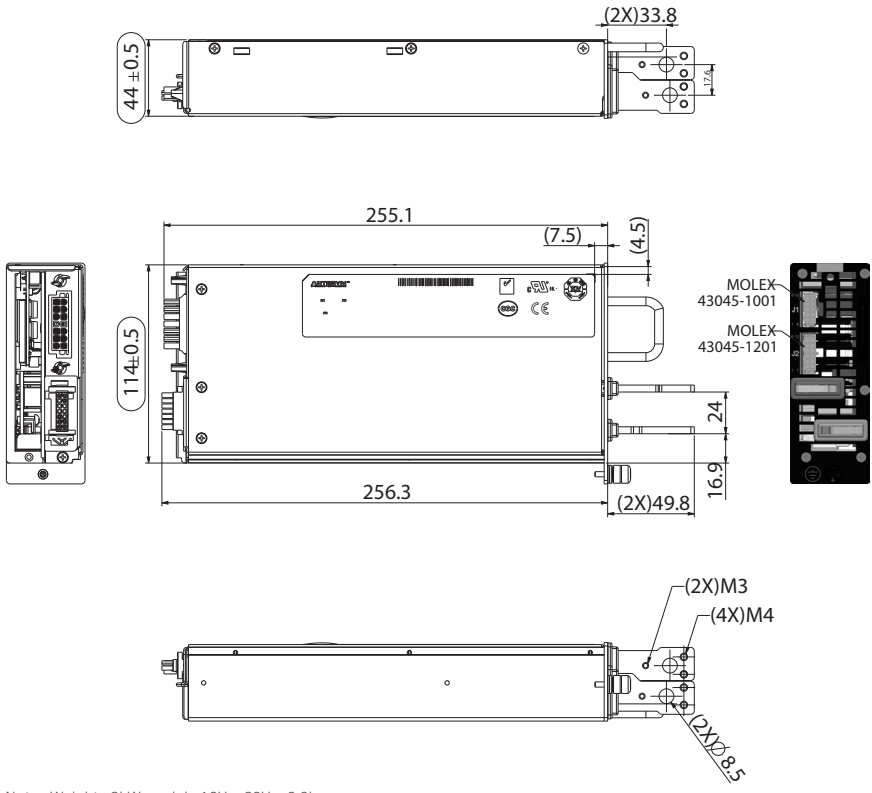
IHP12/15 SERIES - MECHANICAL DRAWINGS



IHP24C SERIES - MECHANICAL DRAWINGS

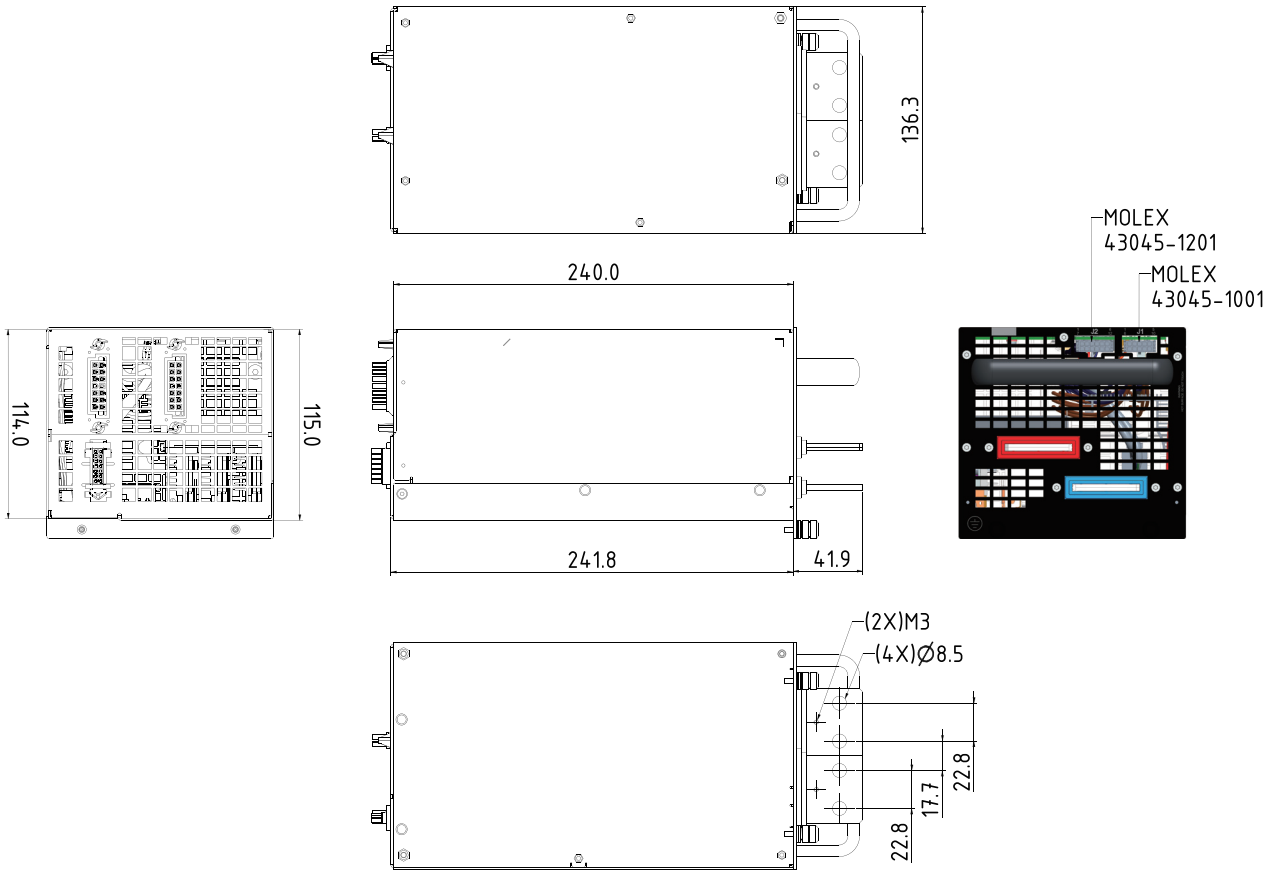


IHP MODULES - MECHANICAL DRAWINGS



Note : Weight : 3kW module 12V – 32V – 2.2kg
3kW module 48V – 300V – 2.0kg

12KW MODULES - MECHANICAL DRAWINGS



Note : Weight : 12kW 300V module (73-938-0300) – 5.1kgW
12kW 50V module (73-938-0050) – 5.95kg



For international contact information,
visit advancedenergy.com.

powersales@aei.com (Sales Support)
productsupport.ep@aei.com (Technical Support)
+1 888 412 7832

ABOUT ADVANCED ENERGY

Advanced Energy (AE) has devoted more than four decades to perfecting power for its global customers. AE designs and manufactures highly engineered, precision power conversion, measurement and control solutions for mission-critical applications and processes.

Our products enable customer innovation in complex applications for a wide range of industries including semiconductor equipment, industrial, manufacturing, telecommunications, data center computing, and medical. With deep applications know-how and responsive service and support across the globe, we build collaborative partnerships to meet rapid technological developments, propel growth for our customers, and innovate the future of power.

PRECISION | POWER | PERFORMANCE | TRUST

Specifications are subject to change without notice. Not responsible for errors or omissions. ©2025 Advanced Energy Industries, Inc. All rights reserved. Advanced Energy®, AE® and Artesyn™ are U.S. trademarks of Advanced Energy Industries, Inc.