

Stationary, digital pyrometers for non-contact temperature measurement with video sighting for the optical alignment to the measuring object

**IS 6-TV Advanced • IGA 6-TV Advanced • IGA 6/23-TV Advanced
ISR 6-TV Advanced • IGAR 6-TV Advanced**

(Addendum to Datasheets IS 6 Advanced, IGA 6 Advanced, IGA 6/23 Advanced, ISR 6 Advanced, and IGAR 6 Advanced)

- Integrated color camera module for sighting
- Optical alignment to the measuring object using a monitor or via InfraWin software with an external video grabber
- Video output galvanically isolated from power supply, analog output, and digital interface
- Display image details including: current temperature reading, date/time, user text, one selectable parameter



The Series 6-TV Advanced pyrometers are digital, compact, and fast pyrometers for non-contact temperature measurement.

With a color camera module, the optical alignment to the measuring object can be achieved with a monitor or using the software InfraWin 5 in conjunction with an external video grabber (see accessories).

The video output of the pyrometers can be directly connected to the video input of the monitor or video grabber. The inserted circular target marker allows an exact alignment to the measuring object.

TECHNICAL DATA

(different from IS 6 Advanced, IGA 6 Advanced, IGA 6/23 Advanced, ISR 6 Advanced, and IGAR 6 Advanced)

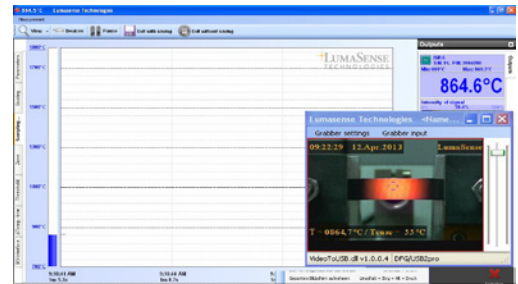
| | |
|--------------------------------|--|
| Video-Signal: | FBAS-Signal approximately 1 VSS at 75 Ohms, PAL (B), 50 Hz, CCIR656 |
| Date/Time: | Real time clock with about 14 days buffer (GoldCap) |
| Connection of Video-Signal: | Separate triaxial socket to support double shielded signal transmission (at pyrometer), CINCH or BNC connector (on user side) |
| Operating ambient temperature: | 0 to 60 °C on the housing |
| Field of view: | About 11.6% x 8.4% of the adjusted measuring distance |
| Superimposed text elements: | Circular target marker, user text, time, date, measured temperature Additional: device temperature or distance or serial number or intensity (only ISR) |
| Resolution: | 768 x 576 pixel video chip 768 x 520 pixel displayed on screen |
| Brightness control: | Automatic or manual (via software) |

TYPICAL APPLICATIONS

- Metal Processing
- Steel Making
- Glass Industry
- Cement Industry
- Solar Industry



Example video image



InfraWin 5 with integrated video image

Optics

The Series 6 Pyrometers can be manually adjusted at all distances between 210 mm and 5000 mm and the focus distance of the visual camera equals the focus distance of the infrared detector. The size of the target marking circle displayed in the video image equals the spot size of the pyrometer at the set measuring distance. For spot sizes, please refer to the datasheet for the associated Series 6 base instrument (IS 6 Advanced, IGA 6 Advanced, IGA 6/23 Advanced, ISR 6 Advanced, or IGAR 6 Advanced).

Reference Numbers

| Type | Temperature Range | Reference Number |
|------------------------------------|-------------------------|------------------|
| IS 6-TV Advanced (PAL / RS485) | 600 to 1800 °C (MB 18) | 3 914 570 |
| | 600 to 3000 °C (MB 30) | 3 914 530 |
| IGA 6-TV Advanced (PAL / RS485) | 250 to 1800 °C (MB 18) | 3 914 070 |
| | 250 to 2500 °C (MB 25) | 3 914 030 |
| IGA 6/23-TV Advanced (PAL / RS485) | 50 to 1000 °C (MB 10) | 3 914 230 |
| | 75 to 1300 °C (MB 13) | 3 914 270 |
| | 150 to 1800 °C (MB 18) | 3 914 310 |
| ISR 6-TV Advanced (PAL / RS485) | 600 to 1400 °C (MB 14) | 3 904 030 |
| | 700 to 1800 °C (MB 18) | 3 904 090 |
| | 800 to 2500 °C (MB 25) | 3 904 160 |
| | 1000 to 3000 °C (MB 30) | 3 904 230 |
| IGAR 6-TV Advanced (PAL / RS485) | 100 to 2000 °C (MB 20) | 3 914 720 |

Scope of delivery:

Pyrometer with PC software InfraWin for adjustment and evaluation, Works Certificate, and Manual

Ordering note:

Connection and video cables are not included in the scope of delivery and must be ordered separately.

Accessories - Video Related

| | | | |
|-----------|-----------------------------|-----------|--|
| 3 920 600 | Video cable BNC, 5 m long* | 3 920 670 | Video cable BNC, 45 m long* |
| 3 920 610 | Video cable BNC, 10 m long* | 3 920 680 | Video cable BNC, 60 m long* |
| 3 920 620 | Video cable BNC, 15 m long* | 3 920 690 | Video cable BNC, 100 m long* |
| 3 920 630 | Video cable BNC, 20 m long* | 3 826 740 | Passive Video Baluns with BNC connectors for transmitting video signals over standard inexpensive patch cable (eg CAT5 cable). Maximum cable length: 300 m with color video. |
| 3 920 640 | Video cable BNC, 25 m long* | 3 826 730 | Video grabber (converts analog TV to USB) |
| 3 920 650 | Video cable BNC, 30 m long* | | |
| 3 920 660 | Video cable BNC, 40 m long* | | |

*All video cables include an adapter BNC-socket to RCA male (CINCH)

Accessories - Other

| | | | |
|-----------|--|-----------|--|
| 3 820 330 | Connection cable, 5 m, straight connector** | 3 826 510 | PI 6000: PID programmable controller |
| 3 820 500 | Connection cable, 10 m, straight connector** | 3 890 640 | DA 4000-N: LED digital display to be built into the switchboard |
| 3 820 510 | Connection cable, 15 m, straight connector** | 3 890 650 | DA 4000: like the DA 4000-N, but additionally with 2 limit switches |
| 3 820 810 | Connection cable, 20 m, straight connector** | 3 890 570 | DA 6000-N digital display, to allow adjustment of Pyrometer through RS485 interface |
| 3 820 820 | Connection cable, 25 m, straight connector** | 3 890 530 | DA 6000: like the DA 6000-N, but with analog input and 2 limit switches for the RS485 interface. |
| 3 820 520 | Connection cable, 30 m, straight connector** | 3 890 630 | iLD24-UTP; large digital indicator, 57 mm height of digits |
| 3 820 340 | Connection cable, 5 m, 90° connector** | 3 834 210 | Adjustable mounting support |
| 3 820 530 | Connection cable, 10 m, 90° connector** | 3 846 260 | Mounting support |
| 3 820 540 | Connection cable, 15 m, 90° connector** | 3 846 290 | Mounting support with fused silica window |
| 3 820 830 | Connection cable, 20 m, 90° connector** | 3 835 160 | Air purge unit, aluminium |
| 3 820 840 | Connection cable, 25 m, 90° connector** | 3 835 590 | 90° mirror for Series 5, quartz glass window |
| 3 820 550 | Connection cable, 30 m, 90° connector** | 3 837 530 | Water cooling jacket (heavy duty) with integrated air purge unit for Series 6 with video |
| 3 852 290 | Power supply NG DC for DIN rail mounting; 100 to 240 V AC ⇒ 24 V DC, 1 A | 3 837 540 | Cooling plate for Series 5 and 6, with air purge |
| 3 852 550 | Power supply NG 2D for DIN rail mounting; 85 to 265 V AC ⇒ 24 V DC, 600 mA with 2 settable limit switches | 3 846 590 | Vacuum flange KF16 with quartz glass window |
| 3 826 720 | USB to RS485 adapter cable, 1.8 m long | | |

**All connection cables include a short adapter cable with a 9-pin SUB-D connector. This connector may be used in combination with the RS485 to USB adapter.

LumaSense Technologies

Awakening Your 6th Sense

**Americas and Australia
Sales & Service**
Santa Clara, CA
Ph: +1 800 631 0176
Fax: +1 408 727 1677

**Europe, Middle East, Africa
Sales & Service**
Frankfurt, Germany
Ph: +49 69 97373 0
Fax: +49 69 97373 167

**India
Sales & Support Center**
Mumbai, India
Ph: +91 22 67419203
Fax: +91 22 67419201

**China
Sales & Support Center**
Shanghai, China
Ph: +86 133 1182 7766
Ph: +86 21 5877 2383

info@lumasenseinc.com

LumaSense Technologies, Inc., reserves the right to change the information in this publication at any time.

www.lumasenseinc.com

©2016 LumaSense Technologies. All rights reserved.
Series6-TV_Datasheet-EN - Rev. 11/22/2016